

Quick Possession

CHELSEA  
CHESTERMERE

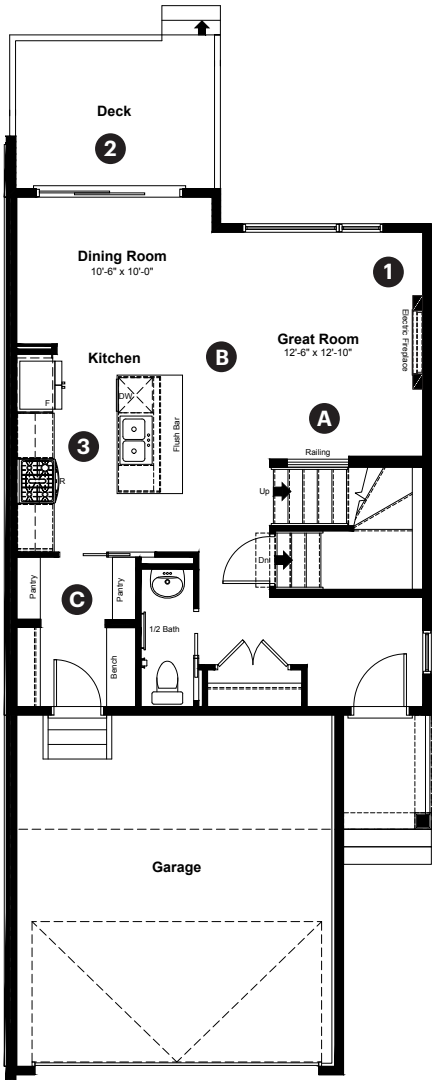
537 Chelsea Gardens  
Chestermere, AB

1,548 sq ft  
3 bedrooms  
2.5 bathrooms

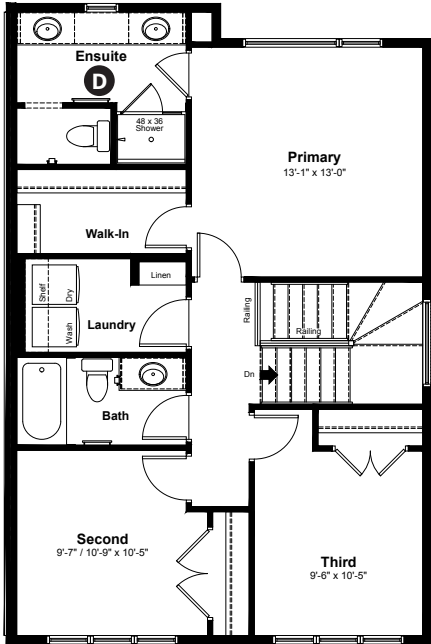
Prairie Elevation



Main Floor: 696 sq ft



Upper Floor: 852 sq ft



Quick Possession Home Options

- 1 Electric fireplace
- 2 Rear deck
- 3 Gas range and chimney hoodfan
- 4 Walkout basement

Quick Possession Home Highlights

- A Main and upper floor railing
- B 9' high main floor ceilings
- C Walkthrough pantry
- D Dual sinks in ensuite

Paired 520

Dimensions, sizes, specifications, layouts and materials are approximate only and subject to change without notice. The builder reserves the right to make change and modifications to the information contained herein. E.&O.E.

Quick  
Possession

**Anthem** 

## CHELSEA

CHESTERMERE

537 Chelsea Gardens  
Chestermere, AB

1,584 sq ft  
3 bedrooms  
2.5 bathrooms

Prairie Elevation



## Features

### Anthem Construction Standards

- Low maintenance architectural asphalt shingles
- Anthem maximizes window coverage on every home to provide your home with natural light
- Windows are also triple plane low-E argon filled windows above grade
- Includes an 50 gallon gas water tank and 96% high-efficient gas furnace with dual-stage with variable speeds. It also has an integrated HRV system with dedicated pick up locations in each bathroom with timers for easy use
- Decora type switches throughout the home
- R-50 blown insulation in all attic spaces

### The Interior

- Ceilings are finished with a knockdown texture
- Luxury vinyl plank flooring on main floor
- Luxury vinyl tile flooring in upper bathrooms and laundry
- Carpet on finished stairs and upstairs with an 8lb underlay
- Quartz countertops in kitchen and bathrooms
- Undermount stainless steel kitchen sink
- Stainless steel appliance package including a gas range, chimney hoodfan and a waterline to the fridge
- Brushed nickel lighting package
- Spindle railing on main and upper floor stairwell

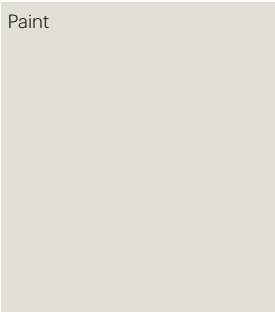
Dimensions, sizes, specifications, layouts and materials are approximate only and subject to change without notice. The builder reserves the right to make change and modifications to the information contained herein. E.&O.E.

Paired 520


# Anthem Home Palette Selections

**Model:** Paired 520      **Address:** 537 Chelsea Gardens, Chestermere AB

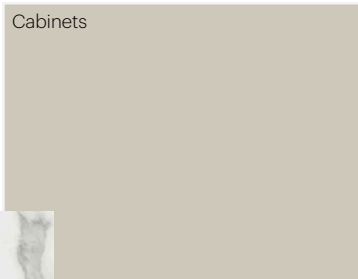
## Cabinets, Flooring and Countertops




Paint



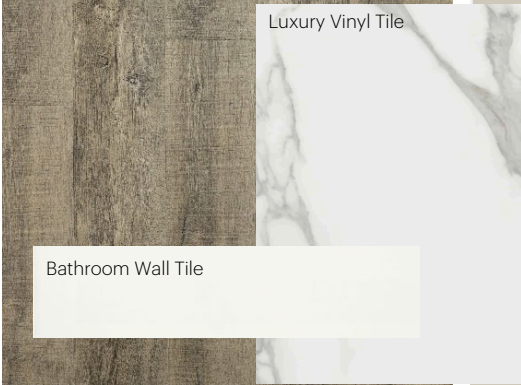
Luxury Vinyl Plank



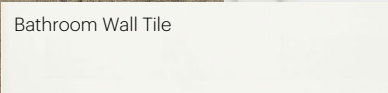
Cabinets



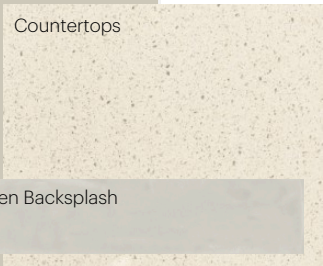
Carpet



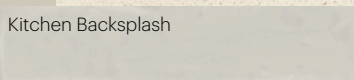
Luxury Vinyl Tile




Bathroom Wall Tile



Countertops



Kitchen Backsplash



Cabinet Hardware

## Plumbing



Kitchen Sink



Kitchen Faucet



Pedestal Sink  
\*faucet shown is not included



Bathroom Faucet



Bathroom Sink



Tub / Shower Faucet

## Finishing



Deadbolt



Interior Door Knob



Bathroom Accessories



Interior Doors



# Anthem Home Palette Selections

**Model:** Paired 520

**Address:** 537 Chelsea Gardens, Chestermere AB

## Lighting



Dining Room



Bathrooms

\*Number of lights determined by size of vanity



Island Pendant



Stairwell

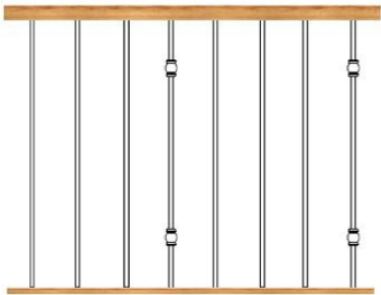


Halls / Closets



Bedrooms

## Railing



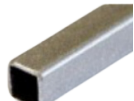
Spindle Pattern



Handrail



Iron Color



Post Cap

Post

## Appliances



Fridge



Chimney Hoodfan



Gas Range



Washer



Dryer



Built-in Microwave



Dishwasher

