

Quick
Possession

D'ARCY
OKOTOKS • ALBERTA

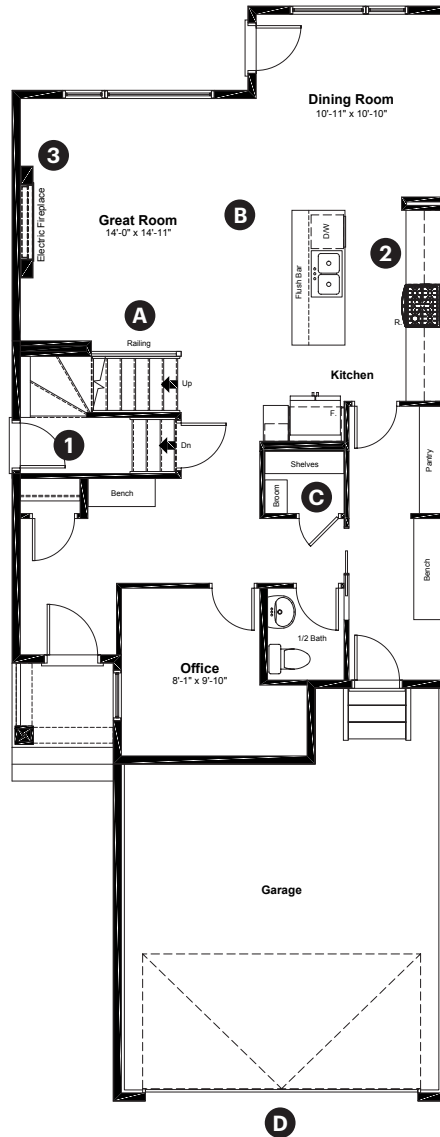
21 Snowberry Lane
Okotoks, AB

2,257 sq ft
3 bedrooms
2.5 bathrooms

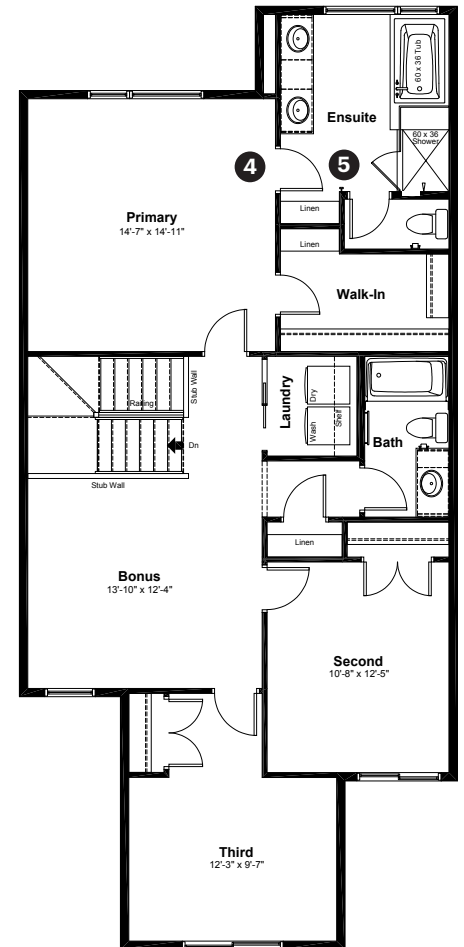
Prairie Elevation

Anthem

Main Floor: 1,028 sq ft



Upper Floor: 1,229 sq ft



Quick Possession Home Options

- 1 Side entry
- 2 Level 2 kitchen cabinet layout with gas range, chimney hoodfan and built in microwave
- 3 Electric fireplace with tile surround to mantle
- 4 Primary ensuite option 1
- 5 Fully tiled ensuite shower with niche

Quick Possession Home Highlights

- A Main floor railing
- B 9' high main floor ceilings
- C Oversized main floor closet
- D 8' overhead garage door

Dimensions, sizes, specifications, layouts and materials are approximate only and subject to change without notice. The builder reserves the right to make change and modifications to the information contained herein. E.&O.E.

Front Drive 111

Quick
Possession

Anthem 

D'ARCY
OKOTOKS • ALBERTA

**21 Snowberry Lane
Okotoks, AB**

2,257 sq ft
3 bedrooms
2.5 bathrooms

Prairie Elevation



Features

Anthem Construction Standards

- Low maintenance architectural asphalt shingles
- Anthem maximizes window coverage on every home to provide your home with natural light
- Windows are also triple plane low-E argon filled windows above grade
- Includes a 50 gallon gas water tank and 96% high-efficient gas furnace with dual-stage with variable speeds. It also has an integrated HRV system with dedicated pick up locations in each bathroom with timers for easy use
- Decora type switches throughout the home
- R-50 blown insulation in all attic spaces
- Rough-in waterline to the fridge

The Interior

- Ceilings are finished with a knockdown texture
- Luxury vinyl plank flooring on main floor
- Luxury vinyl tile flooring in upper bathrooms and laundry
- Carpet on finished stairs and upstairs with an 8lb underlay
- Secondary cabinet color in kitchen
- Quartz countertops in kitchen and bathrooms
- Undermount silgranit kitchen sink
- Stainless steel appliance package including a chimney hoodfan and gas range
- Iron railing on main floor stairwell
- Additional windows added to side elevation
- 9' high basement foundation
- Rough-in gas line for BBQ on deck

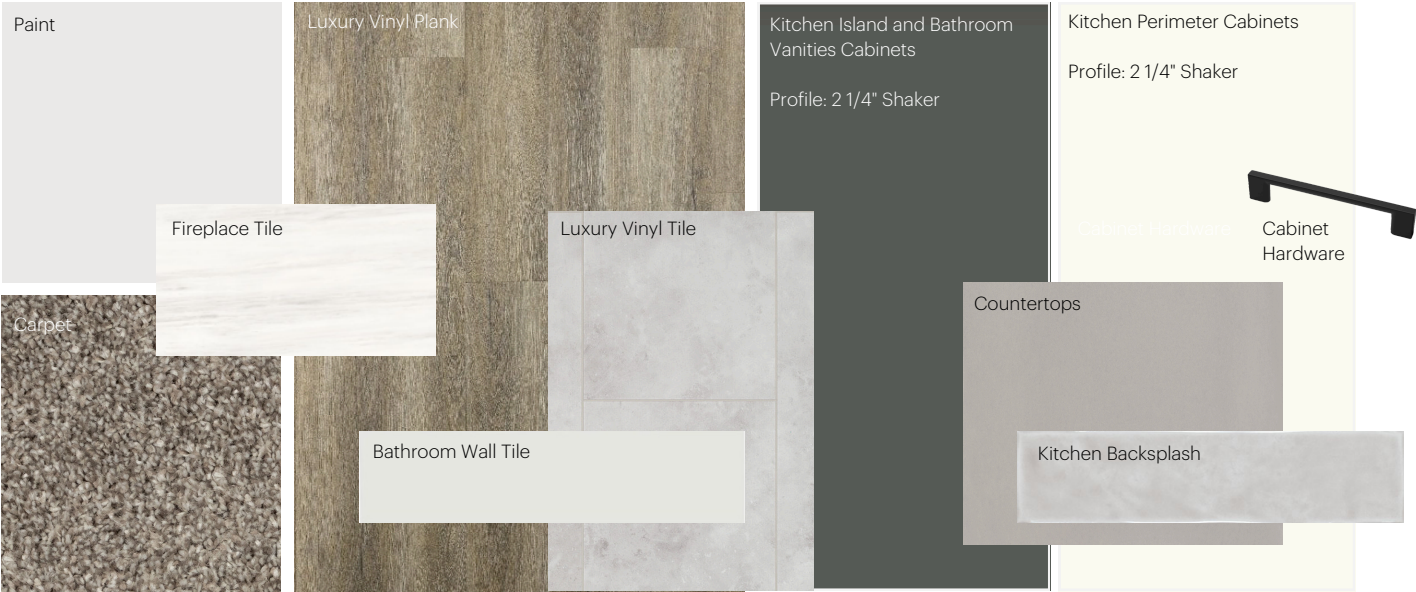
Dimensions, sizes, specifications, layouts and materials are approximate only and subject to change without notice. The builder reserves the right to make change and modifications to the information contained herein. E.&O.E.

Front Drive 111

Anthem Home Palette Selections

Model: Front Drive 111
 Address: 21 Snowberry Lane, Okotoks AB

Cabinets, Flooring and Countertops



Plumbing



Kitchen Sink



Kitchen Faucet



Roman Tub Faucet



Pedestal Sink
*faucet shown is not included



Bathroom Faucet



Bathroom Sink



Tub / Shower Faucet



Deadbolt



Interior Door Lever



Bathroom Accessories



Interior Doors

Finishing

Anthem Home Palette Selections

Model: Front Drive 111 **Address:** 21 Snowberry Lane, Okotoks AB

Lighting



Dining Room



Island Pendant



Stairwell



Halls / Closets



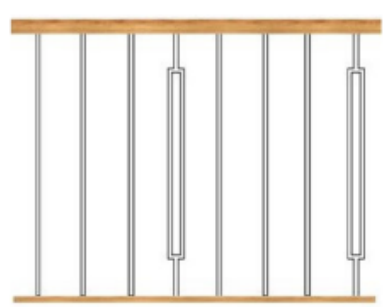
Bedrooms




Bathrooms

*Number of lights determined by size of vanity


Railing

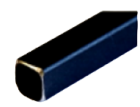


Spindle Pattern




Handrail





Iron Color



Post Cap

Post

Appliances



Fridge



Chimney Hoodfan



Gas Range



Washer



Dryer



Dishwasher



Microwave

