

Quick
Possession

CHELSEA
CHESTERMERE

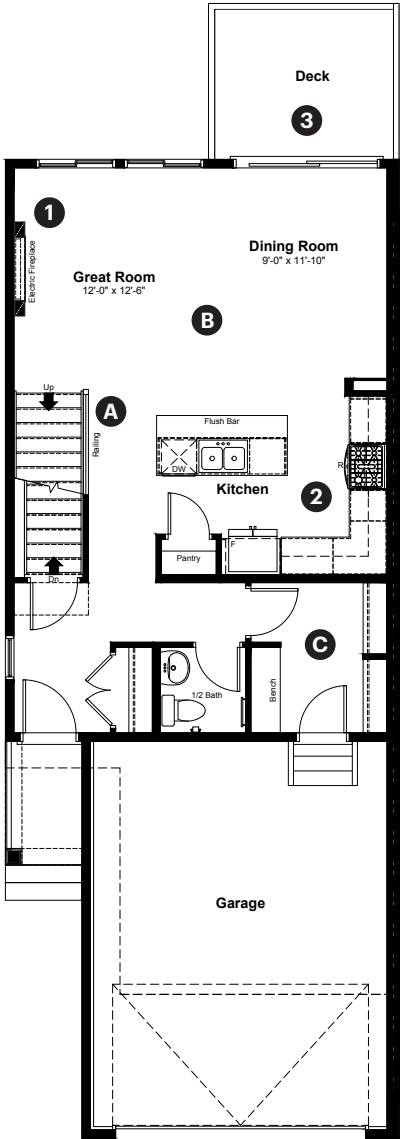
561 Chelsea Gardens
Chestermere, AB

1,684 sq ft
3 bedrooms
2.5 bathrooms

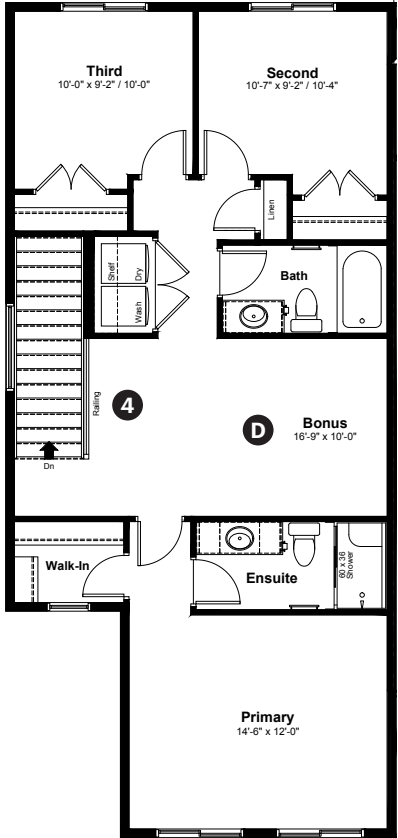
Craftsman Elevation



Main Floor: 726 sq ft



Upper Floor: 958 sq ft



Quick Possession Home Options

- 1 Electric fireplace
- 2 Level 3 kitchen cabinet layout with gas range, chimney hoodfan and built in microwave
- 3 Walkout deck
- 4 Railing on upper level

Quick Possession Home Highlights

- A Main floor railing
- B 9' high main floor ceilings
- C Large mudroom with bench
- D Bonus room

Paired 510

Dimensions, sizes, specifications, layouts and materials are approximate only and subject to change without notice. The builder reserves the right to make change and modifications to the information contained herein. E.&O.E.

Quick
Possession

Anthem 

CHELSEA

CHESTERMERE

561 Chelsea Gardens
Chestermere, AB

1,684 sq ft
3 bedrooms
2.5 bathrooms

Craftsman Elevation



Features

Anthem Construction Standards

- Low maintenance architectural asphalt shingles
- Anthem maximizes window coverage on every home to provide your home with natural light
- Windows are also triple plane low-E argon filled windows above grade
- Includes a 50 gallon gas water tank and 96% high-efficient gas furnace with dual-stage with variable speeds. It also has an integrated HRV system with dedicated pick up locations in each bathroom with timers for easy use
- Decora type switches throughout the home
- R-50 blown insulation in all attic spaces
- Rough-in waterline to fridge

The Interior

- Ceilings are finished with a knockdown texture
- Luxury vinyl plank flooring on main floor
- Luxury vinyl tile flooring in upper bathrooms and laundry
- Carpet on finished stairs and upstairs with an 8lb underlay
- Secondary cabinet color
- Quartz countertops in kitchen and bathrooms
- Undermount silgranit kitchen sink
- Stainless steel appliance package including a chimney hoodfan and gas range
- Iron railing on main and upper floor stairwell
- Additional windows added to side elevation
- 9' high basement foundation
- Walkout basement with sliding patio door

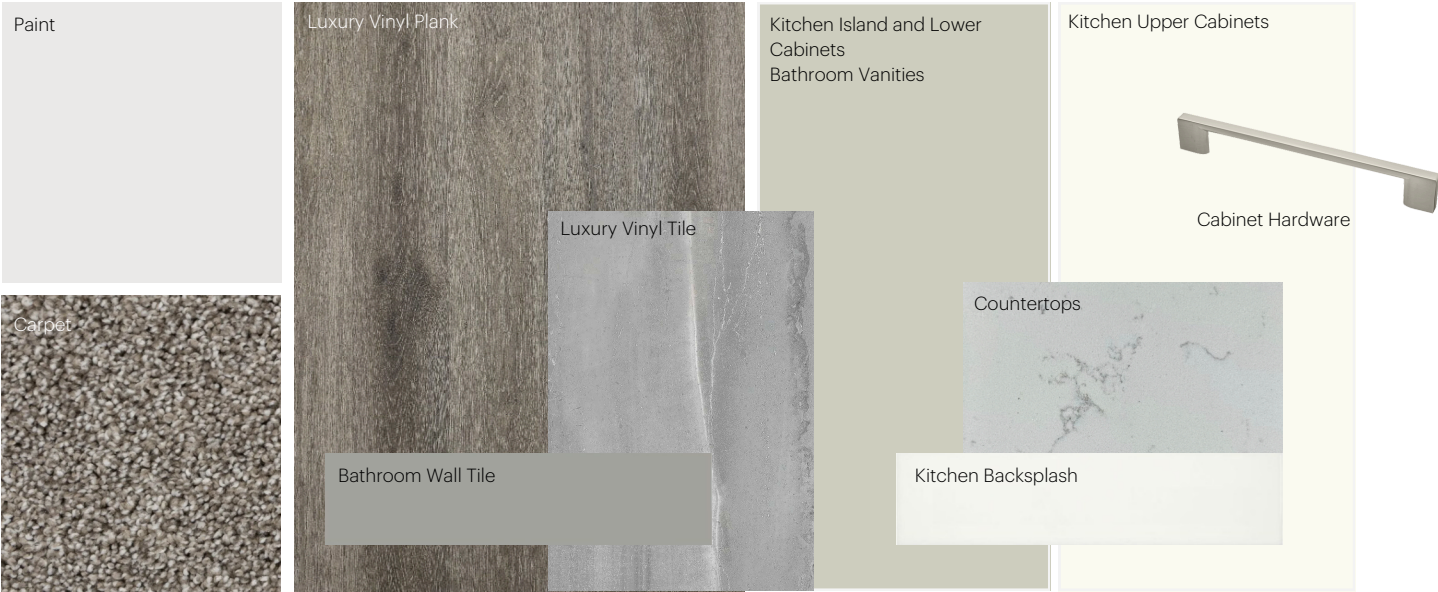
Dimensions, sizes, specifications, layouts and materials are approximate only and subject to change without notice. The builder reserves the right to make change and modifications to the information contained herein. E.&O.E.

Paired 510

Anthem Home Palette Selections

Model: Paired 510
 Address: 561 Chelsea Gardens, Chestermere AB

Cabinets, Flooring and Countertops



Plumbing



Finishing



Anthem Home Palette Selections

Model: Paired 510

Address: 561 Chelsea Gardens, Chestermere AB

Lighting



Dining Room



Island Pendant



Stairwell



Bedrooms



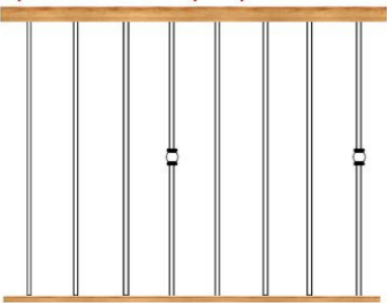
Halls / Closets




Bathrooms

*Number of lights determined by size of vanity

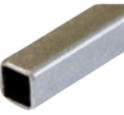
Railing




Spindle Pattern




Handrail



Iron Color




Post Cap




Post


Appliances




Fridge




Chimney Hoodfan




Gas Range



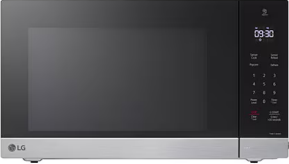
Washer



Dryer



Dishwasher



Microwave

