

Quick Possession

CHELSEA
CHESTERMERE

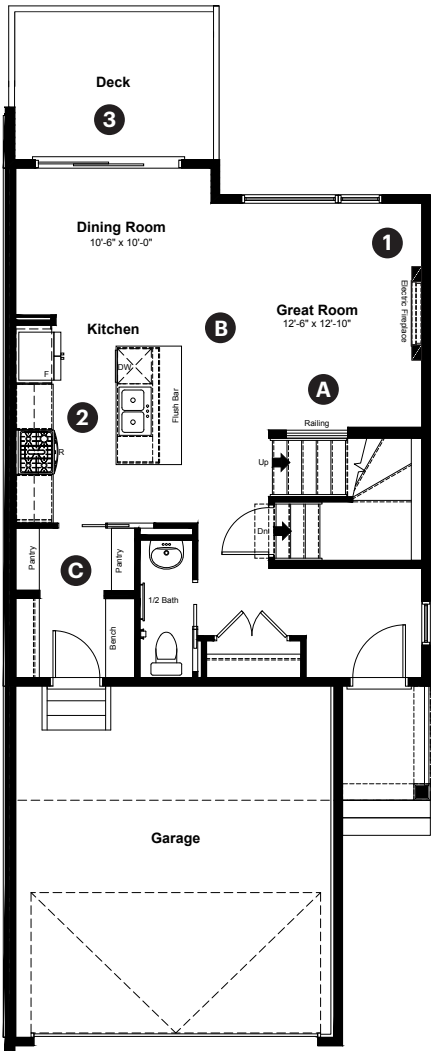
557 Chelsea Gardens
Chestermere, AB

1,548 sq ft
3 bedrooms
2.5 bathrooms

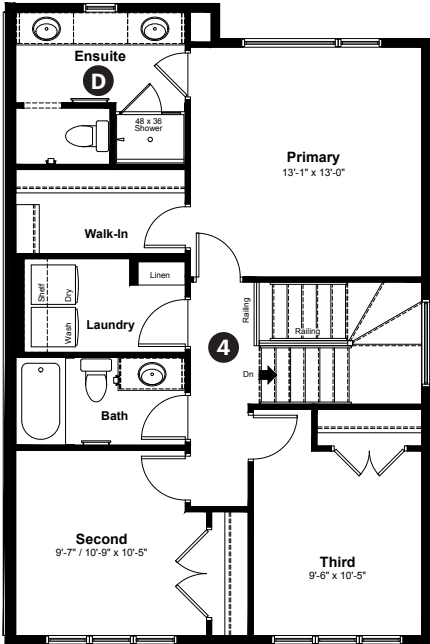
Craftsman Elevation



Main Floor: 696 sq ft



Upper Floor: 852 sq ft



Quick Possession Home Options

- 1 Electric fireplace
- 2 Level 3 kitchen cabinet layout with gas range, chimney hoodfan and built in microwave
- 3 Walkout deck
- 4 Railing on upper level

Quick Possession Home Highlights

- A Main floor railing
- B 9' high main floor ceilings
- C Walkthrough pantry
- D Dual sinks in ensuite

Paired 520

Dimensions, sizes, specifications, layouts and materials are approximate only and subject to change without notice. The builder reserves the right to make change and modifications to the information contained herein. E.&O.E.

Quick
Possession

Anthem 

CHELSEA

CHESTERMERE

557 Chelsea Gardens
Chestermere, AB

1,548 sq ft
3 bedrooms
2.5 bathrooms

Craftsman Elevation



Features

Anthem Construction Standards

- Low maintenance architectural asphalt shingles
- Anthem maximizes window coverage on every home to provide your home with natural light
- Windows are also triple plane low-E argon filled windows above grade
- Includes a 50 gallon gas water tank and 96% high-efficient gas furnace with dual-stage with variable speeds. It also has an integrated HRV system with dedicated pick up locations in each bathroom with timers for easy use
- Decora type switches throughout the home
- R-50 blown insulation in all attic spaces
- Rough-in waterline to fridge

The Interior

- Ceilings are finished with a knockdown texture
- Luxury vinyl plank flooring on main floor
- Luxury vinyl tile flooring in upper bathrooms and laundry
- Carpet on finished stairs and upstairs with an 8lb underlay
- Quartz countertops in kitchen and bathrooms
- Undermount silgranit kitchen sink
- Stainless steel appliance package including a chimney hoodfan and gas range
- Iron railing on main and upper floor stairwell
- Additional windows added to side elevation
- 9' high basement foundation
- Walkout basement with sliding patio door

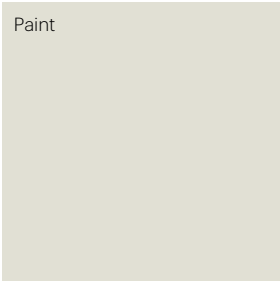
Dimensions, sizes, specifications, layouts and materials are approximate only and subject to change without notice. The builder reserves the right to make change and modifications to the information contained herein. E.&O.E.

Paired 520

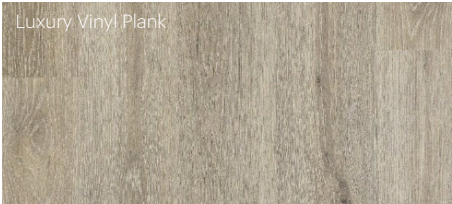
Anthem Home Palette Selections

Model: Paired 520
 Address: 557 Chelsea Gardens, Chestermere AB

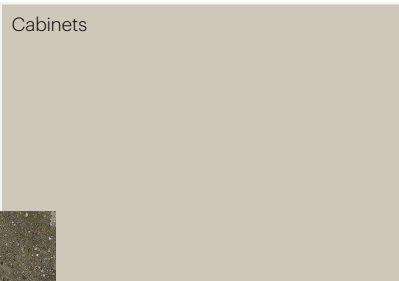
Cabinets, Flooring and Countertops




Paint




Luxury Vinyl Plank




Cabinets



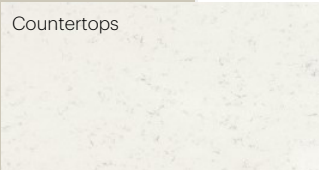
Cabinet Hardware



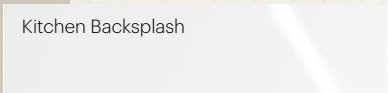
Carpet



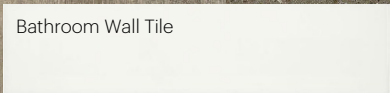
Luxury Vinyl Tile



Countertops



Kitchen Backsplash



Bathroom Wall Tile

Plumbing



Kitchen Sink



Kitchen Faucet



Pedestal Sink
*faucet shown is not included



Bathroom Faucet




Bathroom Sink




Tub / Shower Faucet


Finishing




Deadbolt



Interior Door Knob



Bathroom Accessories



Interior Doors



Anthem Home Palette Selections

Model: Paired 520

Address: 557 Chelsea Gardens, Chestermere AB

Lighting



Dining Room



Island Pendants



Stairwell



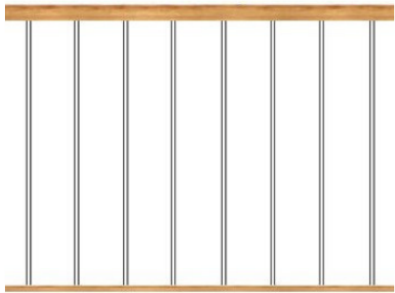
Bathrooms

*Number of lights determined by size of vanity



Bedrooms

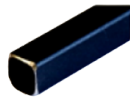
Railing



Spindle Pattern



Handrail



Iron Color



Post Cap

Post

Appliances



Fridge



Chimney Hoodfan



Gas Range



Washer



Dryer



Dishwasher



Microwave

