

Quick
Possession

Wedderburn
OKOTOKS ★ ALBERTA

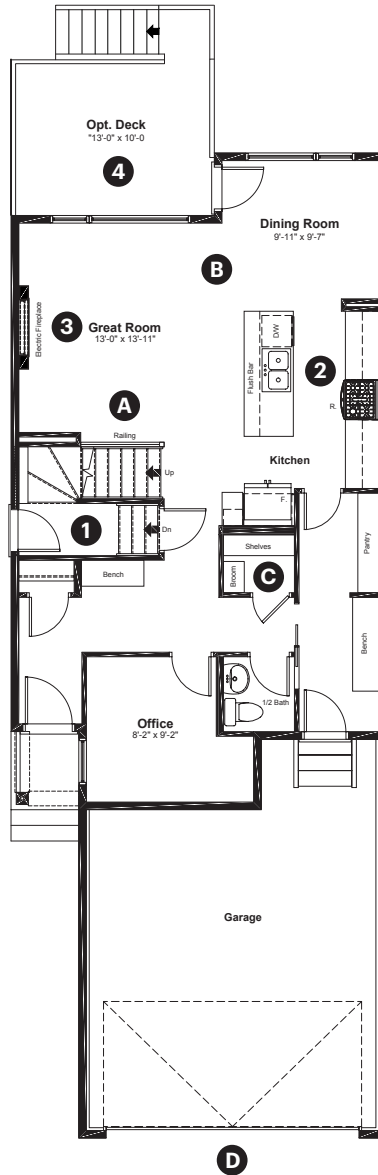
7 Wedderburn Gate
Okotoks, AB

1,961 sq ft
3 bedrooms
2.5 bathrooms

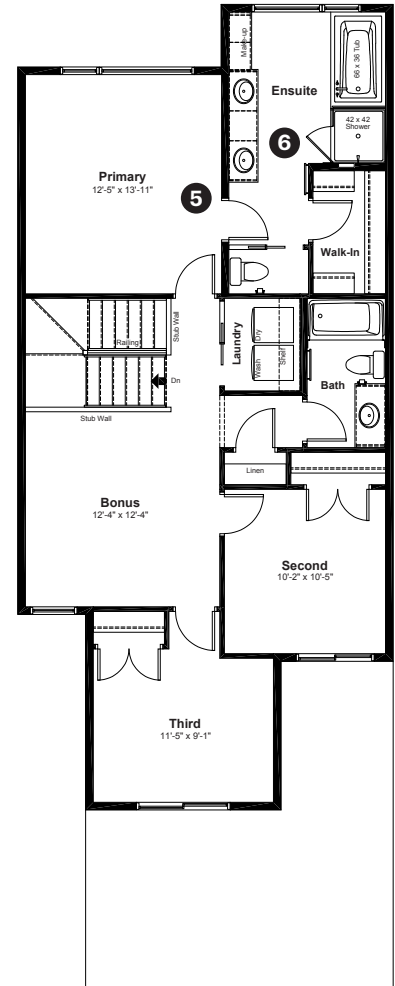
Craftsman Elevation

Anthem

Main Floor: 899 sq ft



Upper Floor: 1,062 sq ft



Quick Possession Home Options

- 1 Side entry
- 2 Level 2 kitchen cabinet layout with gas range, chimney hoodfan and built in microwave
- 3 Electric fireplace with tile surround to mantle
- 4 Rear deck with aluminum railing and glass inserts
- 5 Primary ensuite option 1
- 6 Tiled walls with niche in ensuite shower

Quick Possession Home Highlights

- A Main floor railing
- B 9' high main floor ceilings
- C Oversized main floor closet
- D 8' overhead garage door

Dimensions, sizes, specifications, layouts and materials are approximate only and subject to change without notice. The builder reserves the right to make change and modifications to the information contained herein. E.&O.E.

Front Drive 110

Quick
Possession

Wedderburn
OKOTOKS ★ ALBERTA

7 Wedderburn Gate
Okotoks, AB

1,961 sq ft
3 bedrooms
2.5 bathrooms

Craftsman Elevation

Anthem 



Features

Anthem Construction Standards

- Low maintenance architectural asphalt shingles
- Anthem maximizes window coverage on every home to provide your home with natural light
- Windows are also triple plane low-E argon filled windows above grade
- Includes an 50 gallon gas water tank and 96% high-efficient gas furnace with dual-stage with variable speeds. It also has an integrated HRV system with dedicated pick up locations in each bathroom with timers for easy use
- Decora type switches throughout the home
- R-50 blown insulation in all attic spaces
- Rough-in waterline to fridge

The Interior

- Ceilings are finished with a knockdown texture
- Luxury vinyl plank flooring on main floor
- Luxury vinyl tile flooring in upper bathrooms and laundry
- Carpet on finished stairs and upstairs with an 8lb underlay
- Quartz countertops in kitchen and bathrooms
- Undermount silgranit kitchen sink
- Stainless steel appliance package
- Iron railing on main floor stairwell
- Black matte lighting package
- Additional windows added to side elevation
- 9' high basement foundation
- Rough-in gas line for BBQ on deck

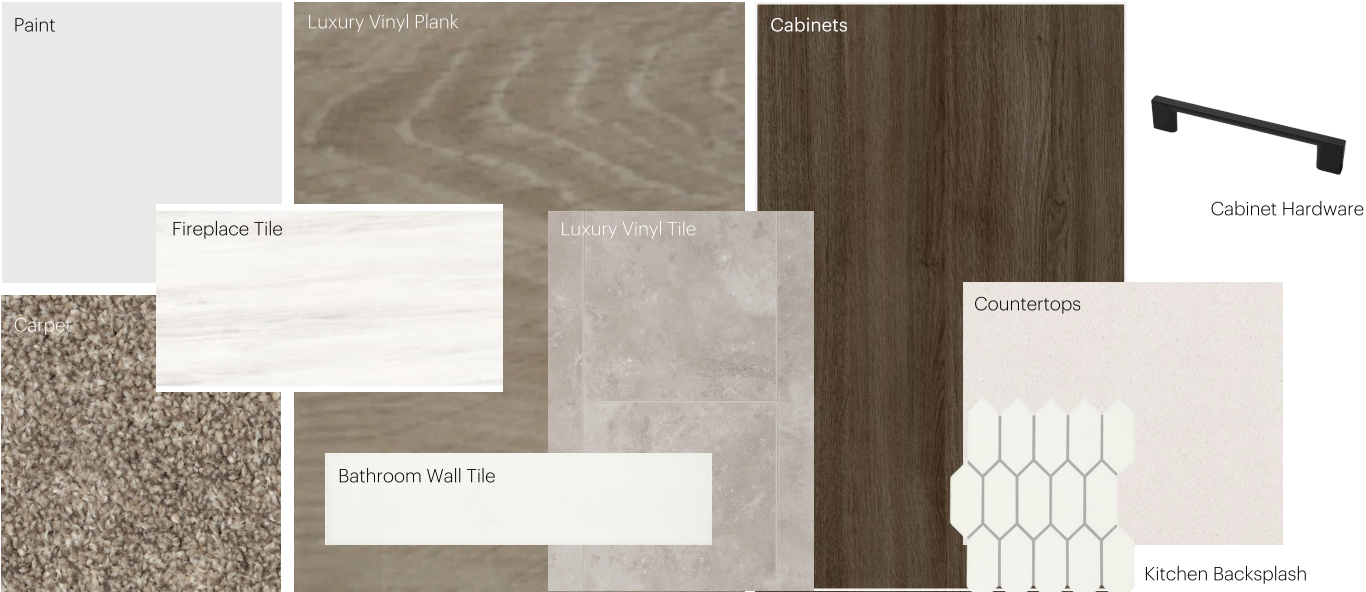
Dimensions, sizes, specifications, layouts and materials are approximate only and subject to change without notice. The builder reserves the right to make change and modifications to the information contained herein. E.&O.E.

Front Drive 110

Anthem Home Palette Selections

Model: Front Drive 110 **Address:** 7 Wedderburn Gate, Okotoks AB

Cabinets, Flooring and Countertops



Plumbing



Finishing



Anthem Home Palette Selections

Model: Front Drive 110

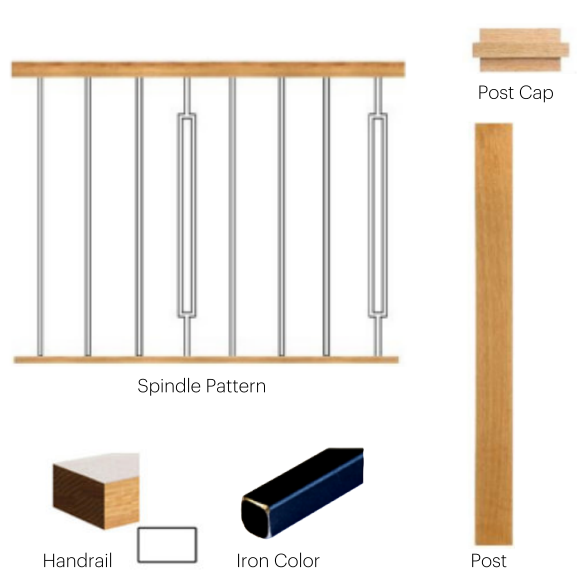
Address: 7 Wedderburn Gate, Okotoks AB

Lighting



*Number of lights determined by size of vanity

Railing



Appliances

