

Quick
Possession



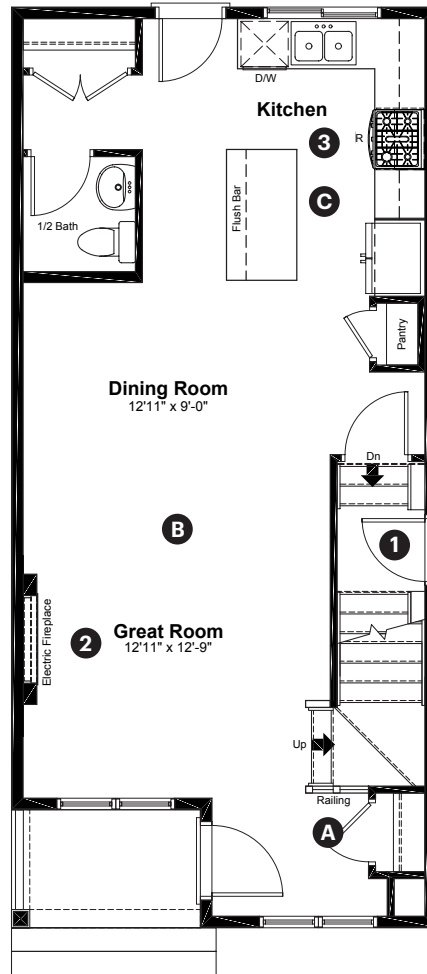
PINE CREEK

918 Creekside Blvd
Calgary, AB

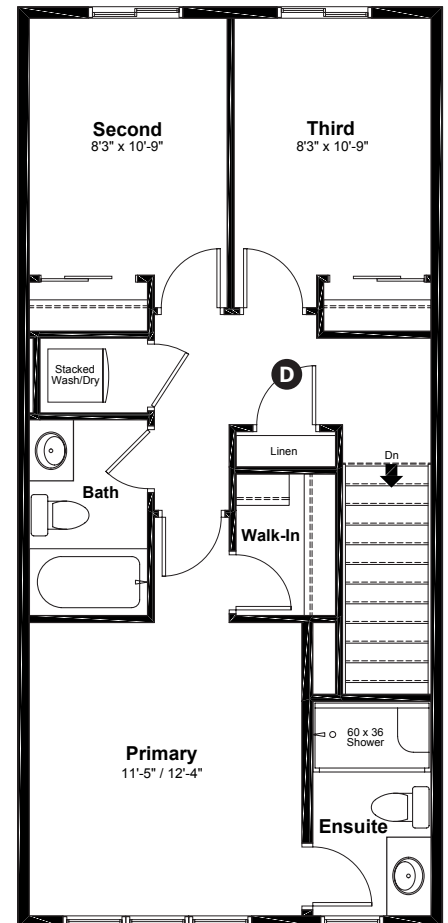
1,364 sq ft
3 bedrooms
2.5 bathrooms

Prairie Elevation

Main Floor: 662 sq ft



Upper Floor: 702 sq ft



Quick Possession Home Options

- 1 Side entry
- 2 Electric Fireplace
- 3 Gas range

Quick Possession Home Highlights

- A Main floor iron spindle railing
- B 9' high main floor ceilings
- C Rear kitchen
- D Upstairs linen closet

Dimensions, sizes, specifications, layouts and materials are approximate only and subject to change without notice. The builder reserves the right to make change and modifications to the information contained herein. E.&O.E.

Laned 150

Quick
Possession



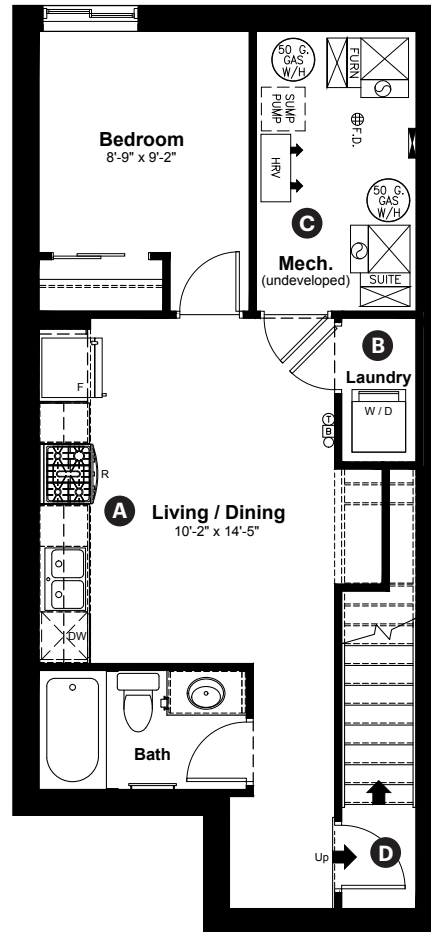
P I N E C R E E K

918 Creekside Blvd
Calgary, AB

Finished Suite
445 sq ft
1 bedroom
1 bathroom

Prairie Elevation

Finished Suite: 445 sq ft



Basement Suite Floorplan Highlights

- A** Kitchen with stainless steel appliance package including a gas range
- B** Laundry closet with stacked washer/dryer
- C** Mechanical room with dual furnace & hot water tanks
- D** Separate side entry

Dimensions, sizes, specifications, layouts and materials are approximate only and subject to change without notice. The builder reserves the right to make change and modifications to the information contained herein. E.&O.E.

Laned 150

Quick
Possession

Anthem 

P I N E C R E E K

**918 Creekside Blvd
Calgary, AB**

1,364 sq ft
3 bedrooms
2.5 bathrooms

Prairie Elevation



Features

Anthem Construction Standards

- Low maintenance architectural asphalt shingles
- Anthem maximizes window coverage on every home to provide your home with natural light
- Windows are also triple plane low-E argon filled windows above grade
- Includes an 80 gallon electric water tank and 96% high-efficient gas furnace with dual-stage with variable speeds. It also has an integrated HRV system with dedicated pick up locations in each bathroom with timers for easy use
- Decora type switches throughout the home
- R-50 blown insulation in all attic spaces
- Rough-in waterline to the fridge

The Interior

- Ceilings are finished with a knockdown texture
- Luxury vinyl plank flooring on main floor
- Luxury vinyl tile flooring in upper bathrooms and laundry
- Carpet on finished stairs and upstairs with an 8lb underlay
- Quartz countertops in kitchen and bathrooms
- Stainless steel kitchen sink
- Stainless steel appliance package including a gas range
- 9' high basement foundation
- Black lighting package
- Fully finished basement suite

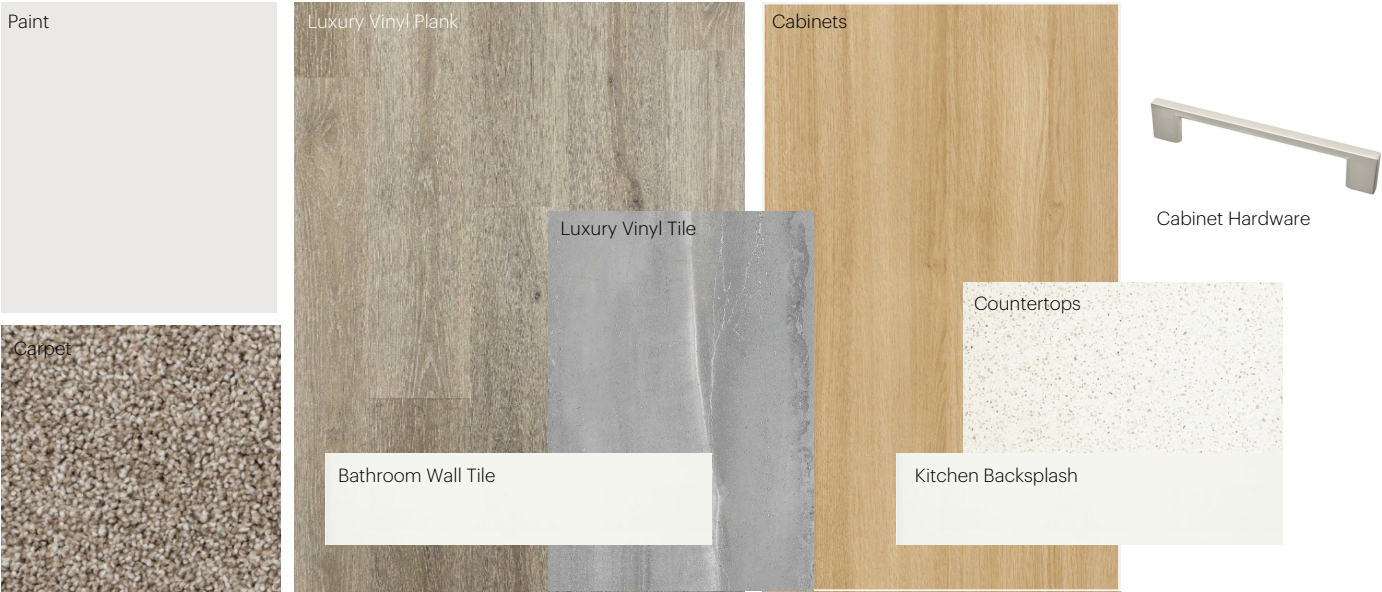
Laned 150

Dimensions, sizes, specifications, layouts and materials are approximate only and subject to change without notice. The builder reserves the right to make change and modifications to the information contained herein. E.&O.E.

Anthem Home Palette Selections

Model: Laned 150
 Address: 918 Creekside Blvd, Pine Creek

Cabinets, Flooring and Countertops



Plumbing



Finishing



Anthem Home Palette Selections

Model: Laned 150
 Address: 918 Creekside Blvd, Pine Creek

Lighting



Dining Room



Island Pendants



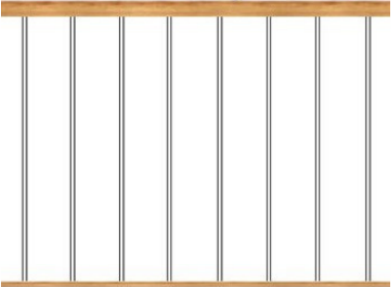
Bathrooms

*Number of lights determined by size of vanity




Bedrooms

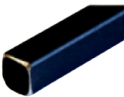
Railing




Spindle Pattern




Handrail



Iron Color




Post Cap

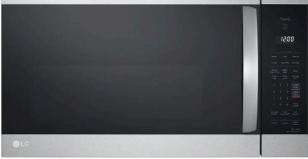


Post


Appliances | Main Kitchen




Fridge




Over The Range Microwave




Gas Range



Washer



Dryer



Dishwasher



Anthem Home Palette Selections

Model: Laned 150, Basement Suite
 Address: 918 Creekside Blvd, Pine Creek

Cabinets, Flooring and Countertops

Paint

Carpet

Luxury Vinyl Plank

Bathroom Wall Tile

Cabinets

Countertops

Kitchen Backsplash

Cabinet Hardware

Plumbing

Kitchen Sink

Kitchen Faucet

Bathroom Faucet

Bathroom Sink

Finishing

Deadbolt

Interior Door Knob

Bathroom Accessories

Interior Doors

Tub / Shower Faucet

Anthem Home Palette Selections

Model: Laned 150, Basement Suite

Address: 918 Creekside Blvd, Pine Creek

Lighting



Living / Dining / Pantry / Kitchen / Hallways
 628FMH | 7" Flush Mount



Stairway / Laundry
 952XEP | 9" Flush Mount



Bedrooms
 767CES | 11" Flush Mount



Vanity Light - 3L
 996DPQ

Appliances



Fridge



Over The Range Microwave



Gas Range



Dishwasher



Washer / Dryer

