

Quick  
Possession

DANSEREAU  
MEADOWS

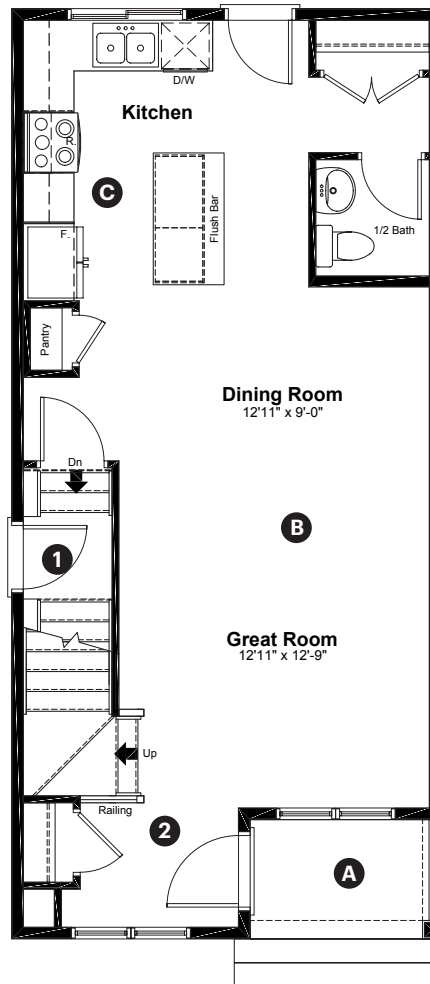
6423 63 Street  
Beaumont, AB

1,364 sq ft  
3 bedrooms  
2.5 bathrooms

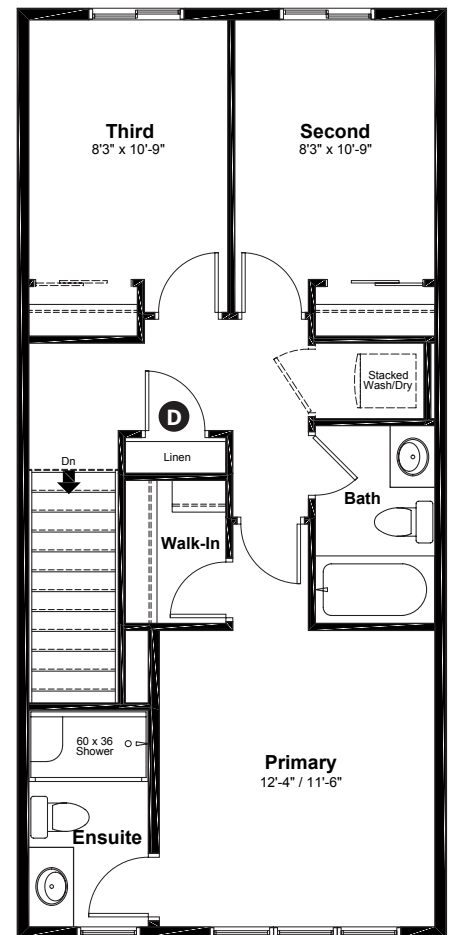
Prairie  
Elevation

Anthem

Main Floor: 662 sq ft



Upper Floor: 702 sq ft



#### Quick Possession Home Options

- 1 Side entry
- 2 Main floor railing

#### Quick Possession Home Highlights

- A Front porch
- B 9' high main floor ceilings
- C Rear kitchen
- D Upstairs linen closet

Dimensions, sizes, specifications, layouts and materials are approximate only and subject to change without notice. The builder reserves the right to make change and modifications to the information contained herein. E.&O.E.

Laned 150

Quick  
Possession

DANSENEAU  
MEADOWS

6423 63 Street  
Beaumont, AB

1,364 sq ft  
3 bedrooms  
2.5 bathrooms

Prairie  
Elevation

Anthem



## Features

### Anthem Construction Standards

- Low maintenance, 30-year architectural asphalt shingles
- Anthem maximizes window coverage on every home to provide your home with natural light
- Windows are also triple plane low-E argon filled windows above grade
- Includes an 80 gallon electric water tank and 96% high-efficient gas furnace with dual-stage with variable speeds. It also has an integrated HRV system with dedicated pick up locations in each bathroom with timers for easy use
- Decora type switches throughout the home
- R-50 blown insulation in all attic spaces
- Rough-in waterline to fridge
- Additional windows added for corner lot

### The Interior

- Ceilings are finished with a splatter texture
- Luxury vinyl plank flooring on main floor
- Luxury vinyl tile flooring in upper bathrooms and laundry
- Carpet on finished stairs and upstairs with an 8lb underlay
- Quartz countertops in kitchen and bathrooms
- Undermount stainless steel kitchen sink
- Undermount bathroom sinks
- Stainless steel appliance package
- Brushed nickel lighting package

Dimensions, sizes, specifications, layouts and materials are approximate only and subject to change without notice. The builder reserves the right to make change and modifications to the information contained herein. E.&O.E.

Laned 150

# Anthem Home Palette Selections

**Model:** Laned 150
 **Address:** 6423 63 Street, Beaumont

## Cabinets, Flooring and Countertops

Paint

Carpet

Luxury Vinyl Plank

Luxury Vinyl Tile

Bathroom Wall Tile

Cabinets

Countertops

Kitchen Backsplash

Cabinet Hardware

## Plumbing

Kitchen Sink

Pedestal Sink

\*faucet shown is not included

Kitchen Faucet

Bathroom Faucet

Bathroom Sink

Tub / Shower Faucet

## Finishing

Deadbolt

Interior Door Knob

Bathroom Accessories

Interior Doors



# Anthem Home Palette Selections

**Model:** Laned 150
 **Address:** 6423 63 Street, Beaumont

## Lighting



Dining Room



Island Pendant



Bedrooms



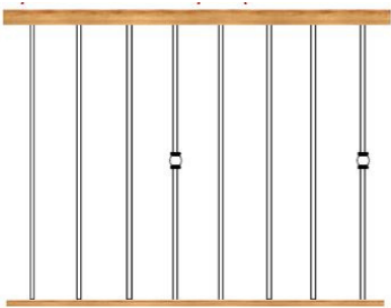
Halls / Closets




Bathrooms

\*Number of lights determined by size of vanity

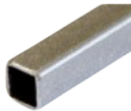
## Railing




Spindle Pattern




Handrail



Iron Color



Post Cap



Post

## Appliances



Fridge



Microwave Hoodfan



Stove



Dishwasher

