

Quick  
Possession

DANSEREAU  
MEADOWS

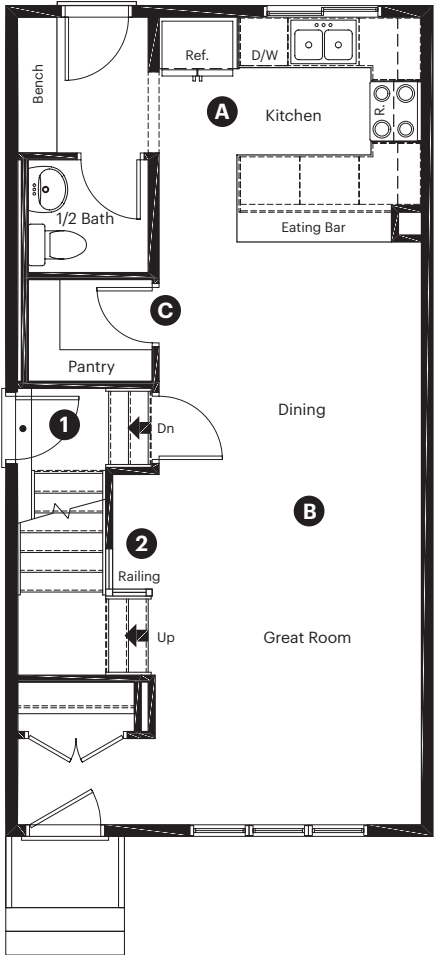
6411 63 Street  
Beaumont, AB

1,260 sq ft  
3 bedrooms  
2.5 bathrooms

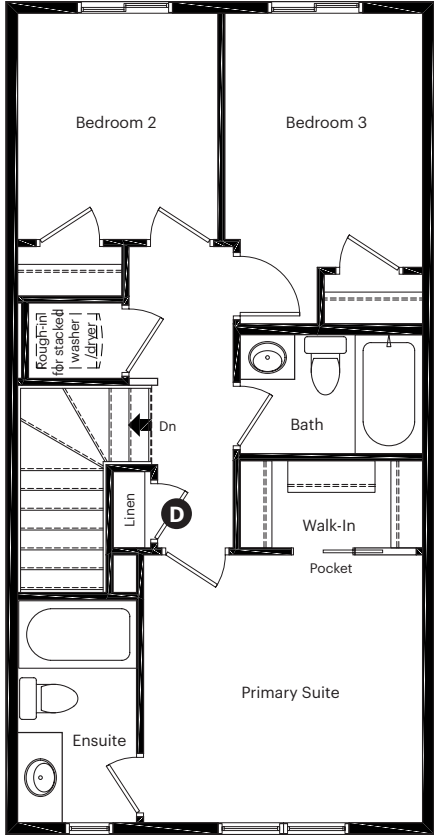
Craftsman Elevation



Main Floor: 630 sq ft



Upper Floor: 630 sq ft



Quick Possession Home Options

- 1 Side entry
- 2 Main floor railing

Quick Possession Home Highlights

- A Rear kitchen
- B 9' high main floor ceilings
- C Walk-in pantry in kitchen
- D Upstairs linen closet

Dimensions, sizes, specifications, layouts and materials are approximate only and subject to change without notice. The builder reserves the right to make change and modifications to the information contained herein. E.&O.E.

Quick  
Possession

DAN SÉREAU  
MEADOWS

6411 63 Street  
Beaumont, AB

1,260 sq ft  
3 bedrooms  
2.5 bathrooms

Craftsman Elevation

Anthem 



## Features

### Anthem Construction Standards

- Low maintenance, 30-year architectural asphalt shingles
- Anthem maximizes window coverage on every home to provide your home with natural light
- Windows are also triple plane low-E argon filled windows above grade
- Includes an 80 gallon electric water tank and 96% high-efficient gas furnace with dual-stage with variable speeds. It also has an integrated HRV system with dedicated pick up locations in each bathroom with timers for easy use
- Decora type switches throughout the home
- R-50 blown insulation in all attic spaces
- Rough-in waterline to the fridge

### The Interior

- Ceilings are finished with a splatter texture
- Luxury vinyl plank flooring on main floor
- Luxury vinyl tile flooring in upper bathrooms and laundry
- Carpet on finished stairs and upstairs with an 8lb underlay
- Quartz countertops in kitchen and bathrooms
- Undermount stainless steel kitchen sink
- Undermount bathroom sinks
- Stainless steel appliance package
- Brushed nickel lighting package

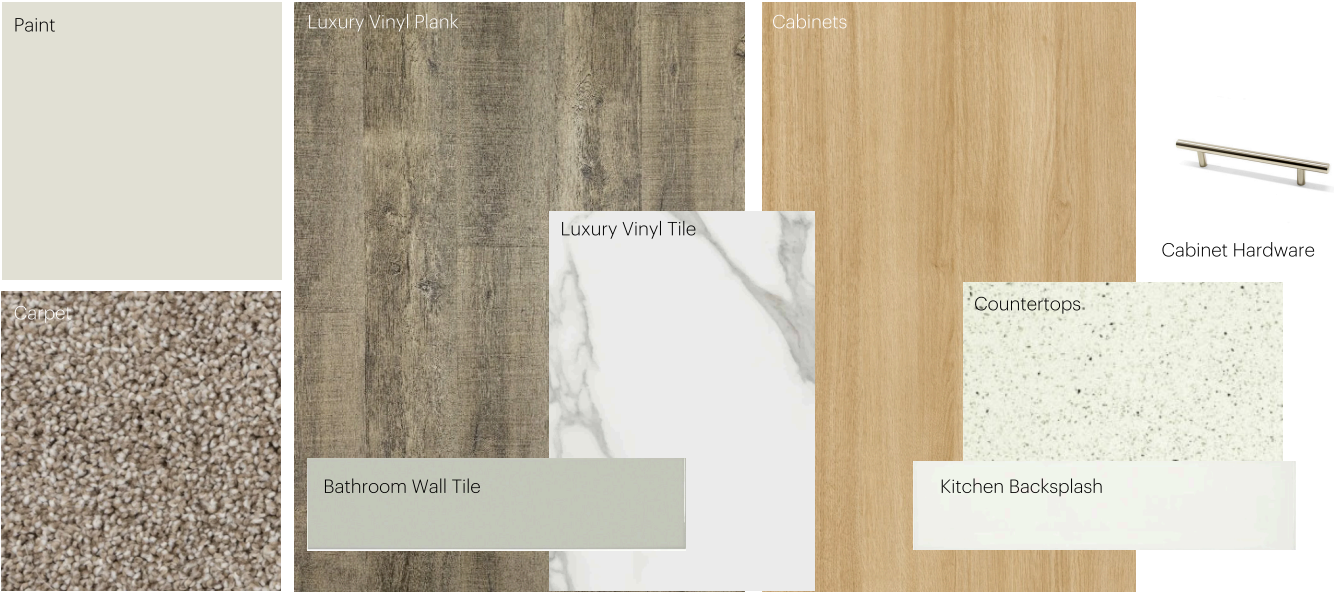
Dimensions, sizes, specifications, layouts and materials are approximate only and subject to change without notice. The builder reserves the right to make change and modifications to the information contained herein. E.&O.E.

Laned 161

# Anthem Home Palette Selections

**Model:** Laned 161
**Address:** 6411 63 Street, Beaumont

## Cabinets, Flooring and Countertops



## Plumbing



## Finishing



# Anthem Home Palette Selections

**Model:** Laned 161
 **Address:** 6411 63 Street, Beaumont

## Lighting



Dining Room



Island Pendant



Bedrooms



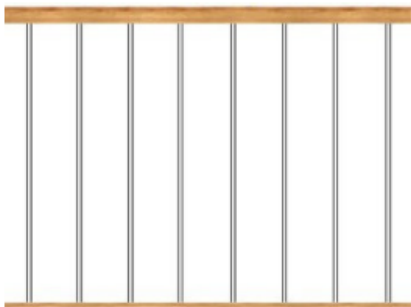
Halls / Closets



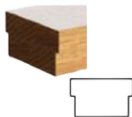
Bathrooms

\*Number of lights determined by size of vanity

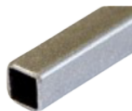
## Railing



Spindle Pattern



Handrail



Iron Color



Post

## Appliances



Fridge



Microwave Hoodfan



Stove



Dishwasher

