

Quick Possession



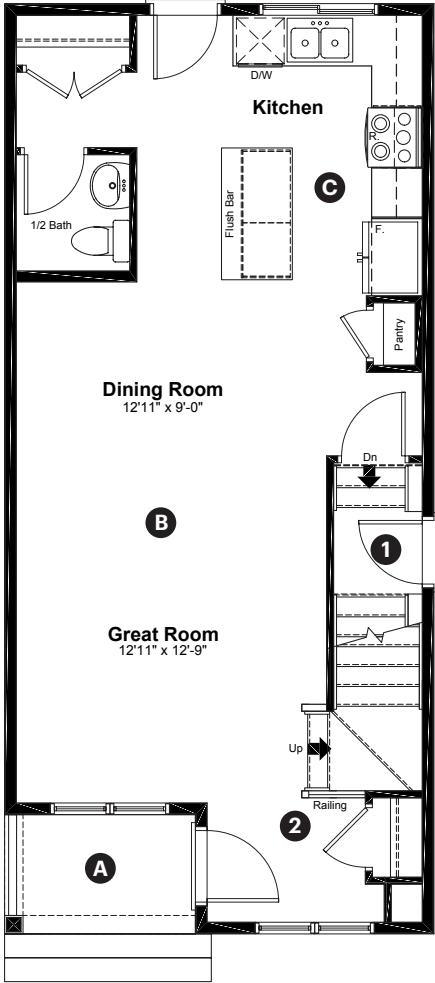
DANSEREAU MEADOWS

6407 63 Street
Beaumont, AB

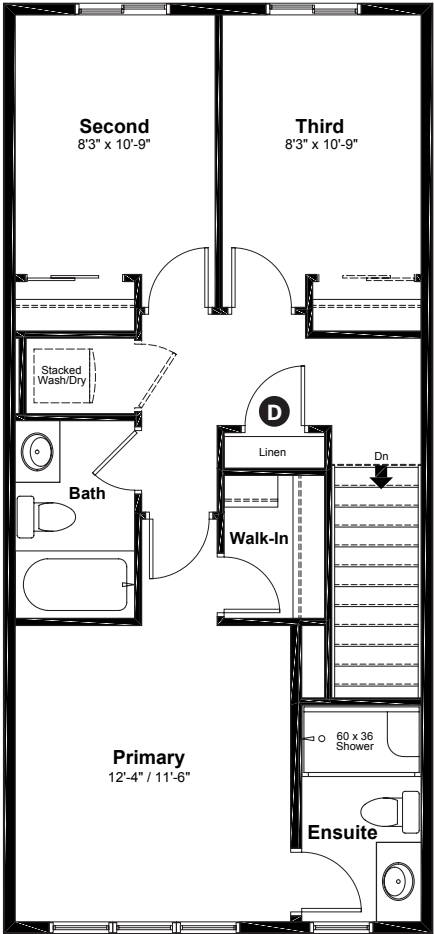
1,364 sq ft
3 bedrooms
2.5 bathrooms

Prairie
Elevation

Main Floor: 662 sq ft



Upper Floor: 702 sq ft



Quick Possession Home Options

- 1 Side entry
- 2 Main floor railing

Quick Possession Home Highlights

- A Front porch
- B 9' high main floor ceilings
- C Rear kitchen
- D Upstairs linen closet

Laned 150

Dimensions, sizes, specifications, layouts and materials are approximate only and subject to change without notice. The builder reserves the right to make change and modifications to the information contained herein. E.&O.E.

Quick
Possession

DAN SEREAU
MEADOWS

6407 63 Street
Beaumont, AB

1,364 sq ft
3 bedrooms
2.5 bathrooms

Prairie
Elevation

Anthem 



Features

Anthem Construction Standards

- Low maintenance, 30-year architectural asphalt shingles
- Anthem maximizes window coverage on every home to provide your home with natural light
- Windows are also triple plane low-E argon filled windows above grade
- Includes an 80 gallon electric water tank and 96% high-efficient gas furnace with dual-stage with variable speeds. It also has an integrated HRV system with dedicated pick up locations in each bathroom with timers for easy use
- Decora type switches throughout the home
- R-50 blown insulation in all attic spaces
- Rough-in waterline to fridge
- 9' basement foundation

The Interior

- Ceilings are finished with a splatter texture
- Luxury vinyl plank flooring on main floor
- Luxury vinyl tile flooring in upper bathrooms and laundry
- Carpet on finished stairs and upstairs with an 8lb underlay
- Quartz countertops in kitchen and bathrooms
- Undermount stainless steel kitchen sink
- Undermount bathroom sinks
- Stainless steel appliance package
- Brushed nickel lighting package

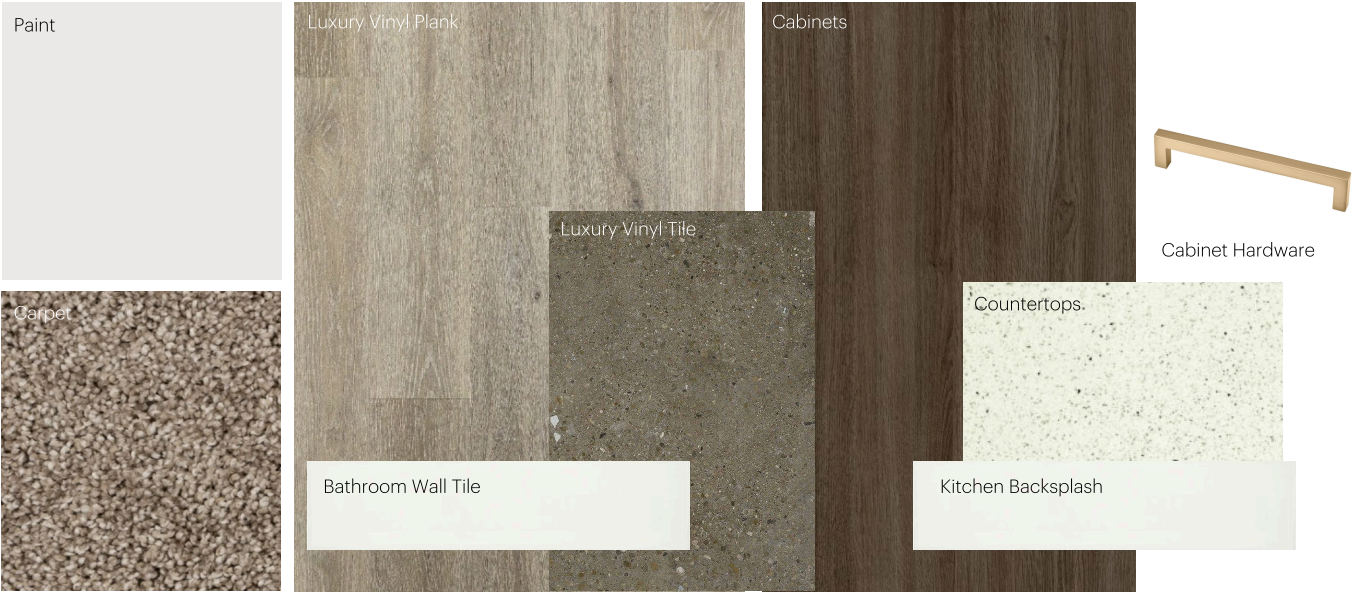
Dimensions, sizes, specifications, layouts and materials are approximate only and subject to change without notice. The builder reserves the right to make change and modifications to the information contained herein. E.&O.E.

Laned 150

Anthem Home Palette Selections

Model: Laned 150
 Address: 6407 63 Street, Beaumont

Cabinets, Flooring and Countertops



Plumbing



Finishing



Anthem Home Palette Selections

Model: Laned 150
 Address: 6407 63 Street, Beaumont

Lighting



Dining Room



Island Pendant



Bedrooms



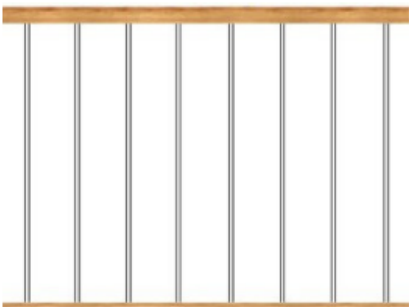
Halls / Closets



Bathrooms

*Number of lights determined by size of vanity

Railing

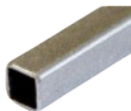


Spindle Pattern

Post Cap



Handrail



Iron Color



Post

Appliances



Fridge



Microwave Hoodfan



Stove



Dishwasher

