

Quick
Possession

McConachie
HEIGHTS

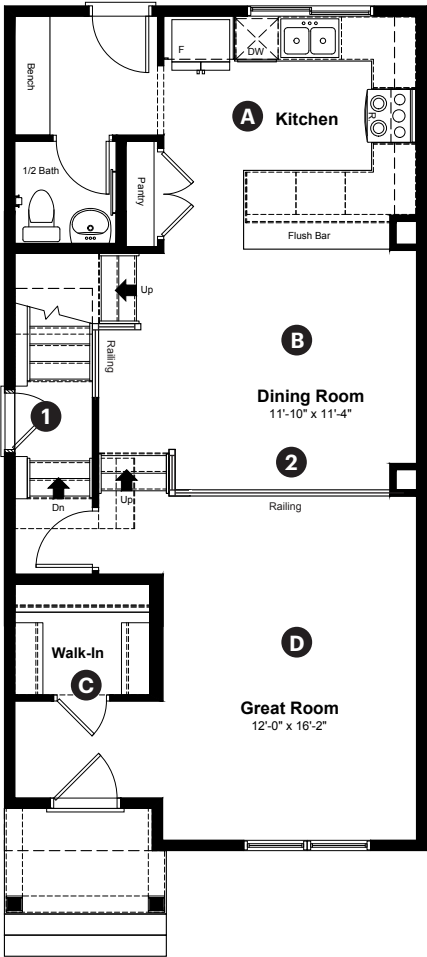
6253 175A
Avenue NW
Edmonton, AB

1,586 sq ft
3 bedrooms
2.5 bathrooms

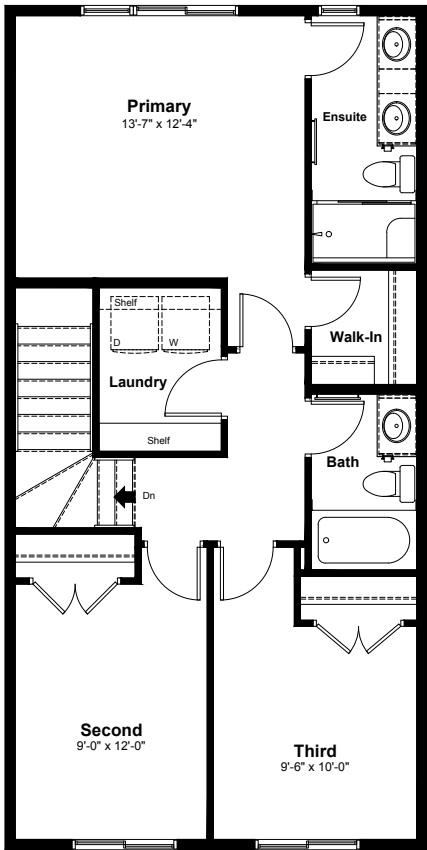
Prairie
Elevation



Main Floor: 786 sq ft



Upper Floor: 800 sq ft



Quick Possession Home Options

- 1 Side entry
- 2 Main floor railing

Quick Possession Home Highlights

- A Rear kitchen
- B 9' high main floor ceilings
- C Large front entry closet
- D Sunken great room

Laned 120

Dimensions, sizes, specifications, layouts and materials are approximate only and subject to change without notice. The builder reserves the right to make change and modifications to the information contained herein. E.&O.E.

Quick
Possession

McConachie
HEIGHTS

6253 175A
Avenue NW
Edmonton, AB

1,586 sq ft
3 bedrooms
2.5 bathrooms

Prairie
Elevation

Anthem



Features

Anthem Construction Standards

- Low maintenance, 30-year architectural asphalt shingles
- Anthem maximizes window coverage on every home to provide your home with natural light
- Windows are also triple plane low-E argon filled windows above grade
- Includes an 80 gallon electric water tank and 96% high-efficient gas furnace with dual-stage with variable speeds. It also has an integrated HRV system with dedicated pick up locations in each bathroom with timers for easy use
- Decora type switches throughout the home
- R-50 blown insulation in all attic spaces
- Rough-in waterline to fridge

The Interior

- Ceilings are finished with a splatter texture
- Luxury vinyl plank flooring on main floor
- Luxury vinyl tile flooring in upper bathrooms and laundry
- Carpet on finished stairs and upstairs with an 8lb underlay
- Quartz countertops in kitchen and bathrooms
- Undermount stainless steel kitchen sink
- Undermount bathroom sinks
- Stainless steel appliance package
- Black matte lighting package

Dimensions, sizes, specifications, layouts and materials are approximate only and subject to change without notice. The builder reserves the right to make change and modifications to the information contained herein. E.&O.E.

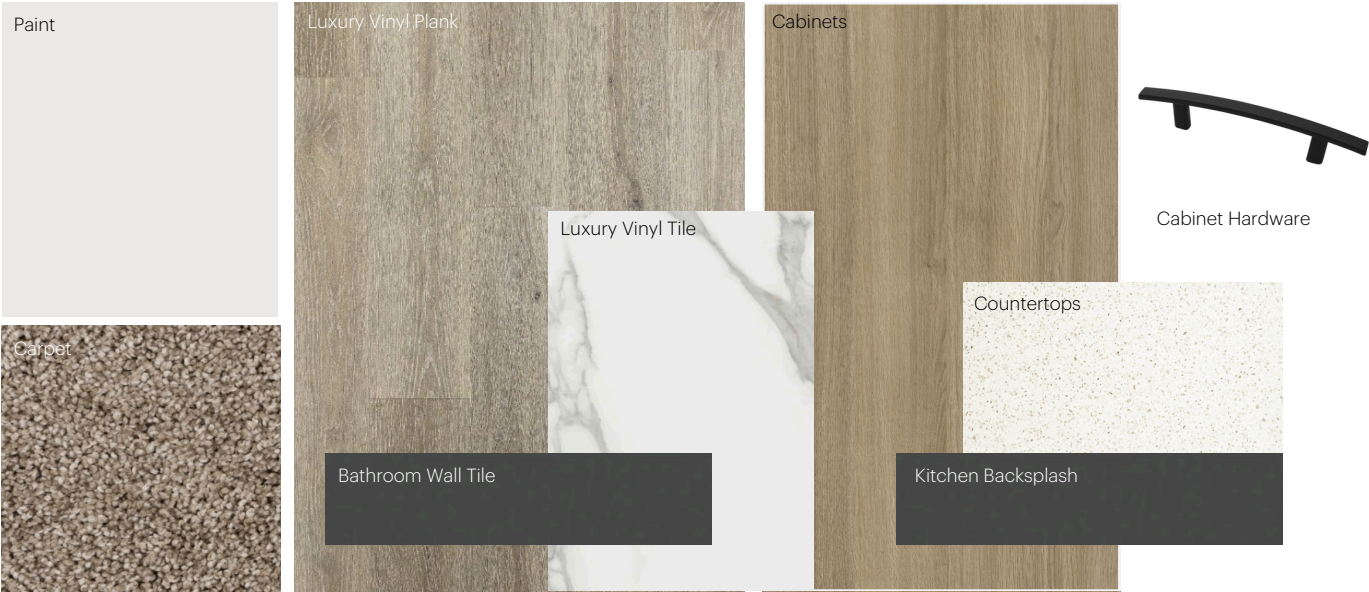
Laned 120

Anthem Home Palette Selections

Model: Laned 120

Address: 6253 175A Avenue, McConachie Heights

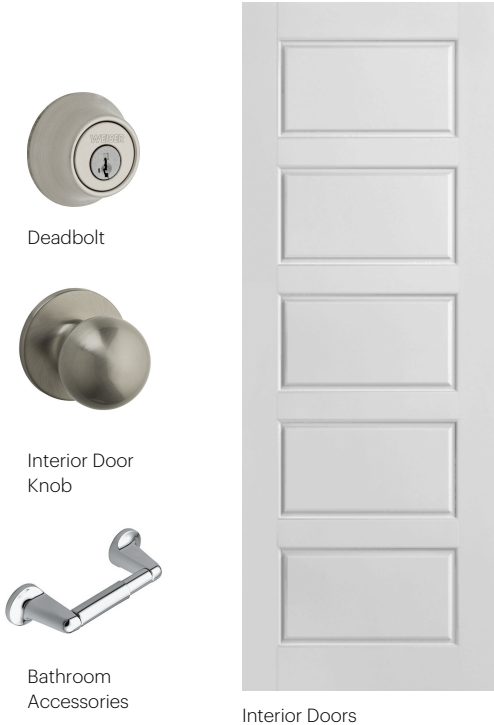
Cabinets, Flooring and Countertops



Plumbing



Finishing



Anthem Home Palette Selections

Model: Laned 120

Address: 6253 175A Avenue, McConachie Heights

Lighting



Dining Room



Island Pendants



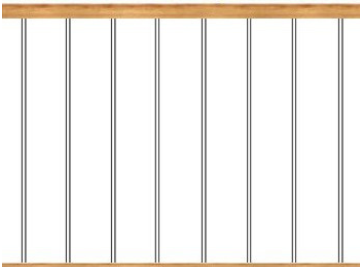
Bathrooms

*Number of lights determined by size of vanity



Bedrooms

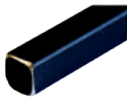
Railing



Spindle Pattern



Handrail



Iron Color

Post Cap



Post

Appliances



Fridge



Microwave Hoodfan



Stove



Dishwasher

