

Quick Possession



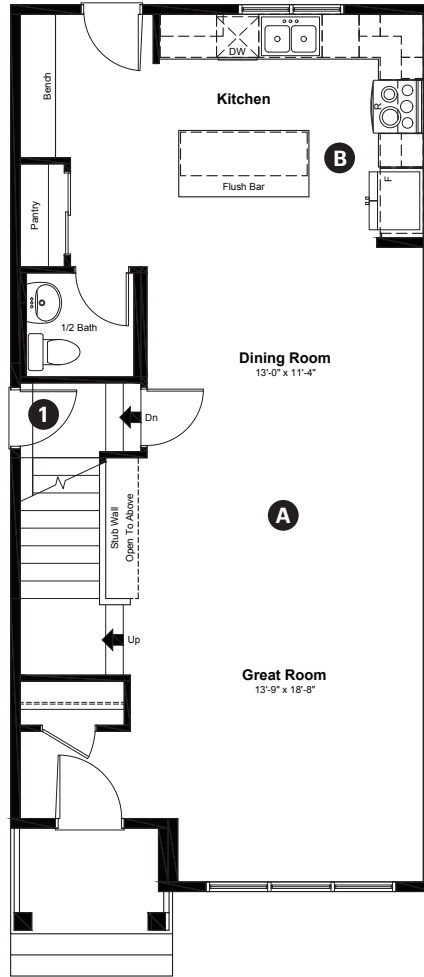
Weston  
AT EDMONTON

328 Edgemont Drive NW  
Edmonton, AB

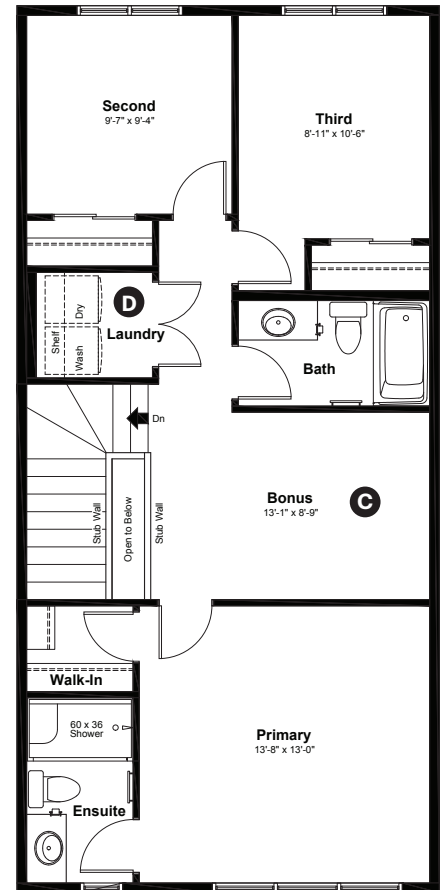
1,647 sq ft  
3 bedrooms  
2.5 bathrooms

Craftsman  
Elevation

Main Floor: 817 sq ft



Upper Floor: 830 sq ft



Quick Possession Home Options

- 1 Side entry

Quick Possession Home Highlights

- A 9' high main floor ceilings
- B Rear kitchen
- C Central bonus room
- D Spacious laundry room

Laned 110

Dimensions, sizes, specifications, layouts and materials are approximate only and subject to change without notice. The builder reserves the right to make change and modifications to the information contained herein. E.&O.E.

Quick  
Possession

Anthem 

Weston  
AT EDMONTON

328 Edgemont  
Drive NW  
Edmonton, AB

1,647 sq ft  
3 bedrooms  
2.5 bathrooms

Craftsman  
Elevation



## Features

### Anthem Construction Standards

- Low maintenance, 30-year architectural asphalt shingles
- Anthem maximizes window coverage on every home to provide your home with natural light
- Windows are also triple plane low-E argon filled windows above grade
- Includes an 80 gallon electric water tank and 96% high-efficient gas furnace with dual-stage with variable speeds. It also has an integrated HRV system with dedicated pick up locations in each bathroom with timers for easy use
- Decora type switches throughout the home
- R-50 blown insulation in all attic spaces
- Rough-in waterline to fridge

### The Interior

- Ceilings are finished with a splatter texture
- Luxury vinyl plank flooring on main floor
- Luxury vinyl tile flooring in upper bathrooms and laundry Carpet on finished stairs and upstairs with an 8lb underlay
- Quartz countertops in kitchen and bathrooms
- Undermount stainless steel kitchen sink
- Stainless steel appliance package
- Black matte lighting package

Laned 110

Dimensions, sizes, specifications, layouts and materials are approximate only and subject to change without notice. The builder reserves the right to make change and modifications to the information contained herein. E.&O.E.