

Quick Possession



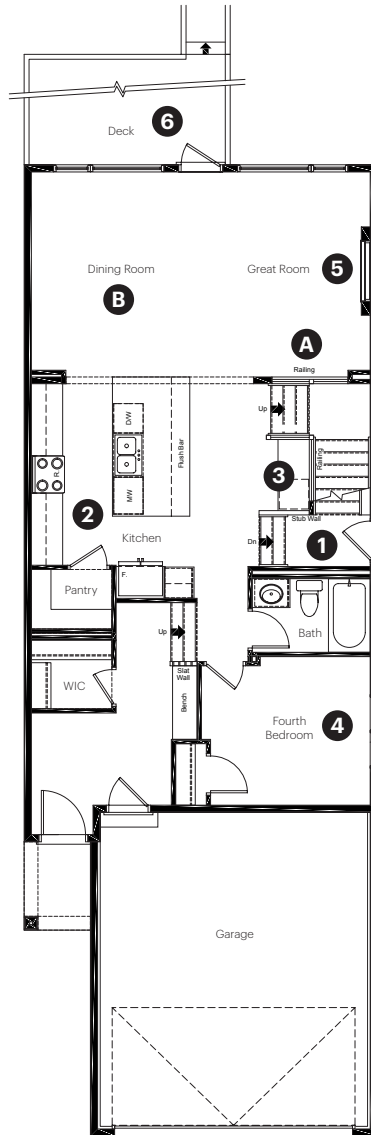
PINECREEK

253 Creekstone Path SW
Calgary, AB

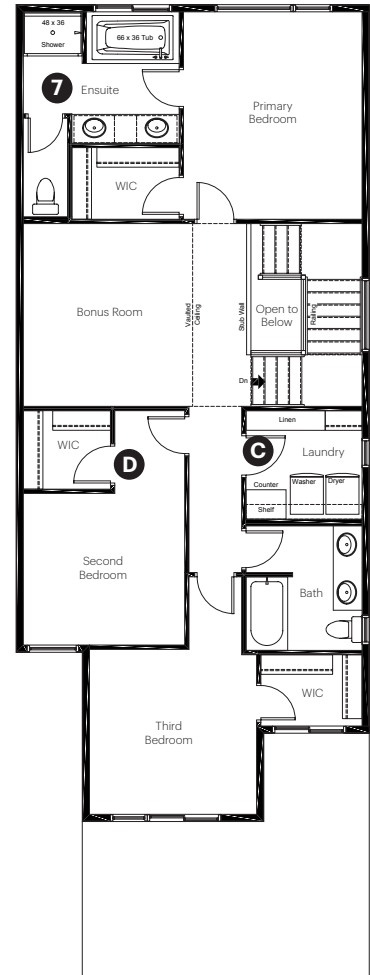
2,284 sq ft
4 bedrooms
3 bathrooms

Prairie Elevation

Main Floor: 1,066 sq ft



Upper Floor: 1,218 sq ft



Quick Possession Home Options

- 1 Side entry
- 2 Level 2 kitchen cabinet layout
- 3 Dry bar with fridge
- 4 Main floor bedroom and full bathroom
- 5 Electric fireplace with full height stone surround and mantle
- 6 Rear deck
- 7 Tiled shower walls in ensuite shower

Quick Possession Home Highlights

- A Main floor railing
- B 9' high main floor ceilings
- C Spacious laundry room
- D Walk-in closets in secondary bedrooms

Dimensions, sizes, specifications, layouts and materials are approximate only and subject to change without notice. The builder reserves the right to make change and modifications to the information contained herein. E.&O.E.

Front Drive 120

Quick
Possession

Anthem 

P I N E C R E E K

253 Creekstone
Path SW
Calgary, AB

2,284 sq ft
4 bedrooms
3 bathrooms

Prairie Elevation



Features

Anthem Construction Standards

- Low maintenance architectural asphalt shingles
- Anthem maximizes window coverage on every home to provide your home with natural light
- Windows are also triple plane low-E argon filled windows above grade
- Includes an 50 gallon gas water tank and 96% high-efficient gas furnace with dual-stage with variable speeds. It also has an integrated HRV system with dedicated pick up locations in each bathroom with timers for easy use
- Decora type switches throughout the home
- R-50 blown insulation in all attic spaces

The Interior

- Ceilings are finished with a knockdown texture
- Hardwood flooring on main floor
- Ceramic tile flooring in bathrooms and laundry
- Carpet on finished stairs and upstairs with an 8lb underlay
- Quartz countertops in kitchen and bathrooms
- Undermount silgranite kitchen sink
- Upgraded stainless steel appliance package including a chimney hoodfan and gas range
- Executive level cabinet package
- Exclusive level chrome plumbing package
- Exclusive level finishing package
- Exclusive level brushed nickel lighting package
- Additional windows added to side elevation
- 9' high basement foundation

Dimensions, sizes, specifications, layouts and materials are approximate only and subject to change without notice. The builder reserves the right to make change and modifications to the information contained herein. E.&O.E.

Front Drive 120