

Quick
Possession

McConachie
HEIGHTS

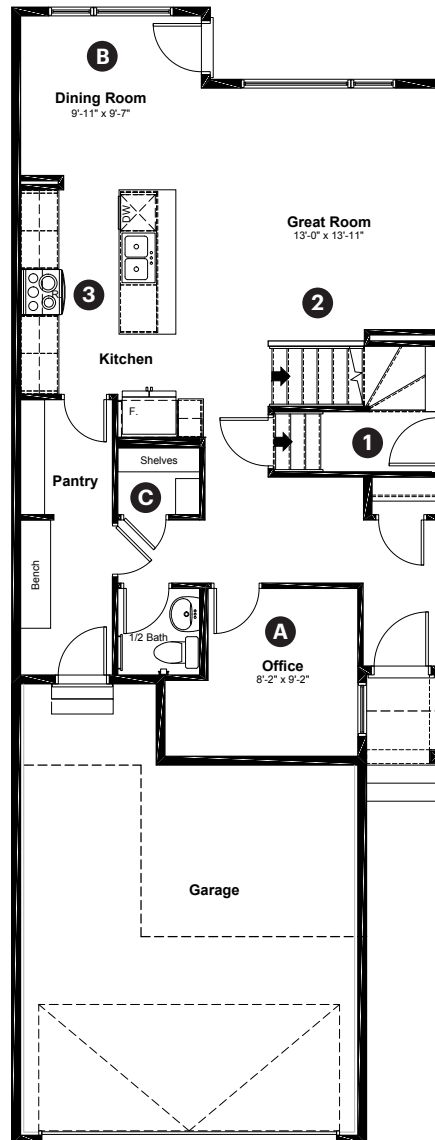
17545 62A Street NW
Edmonton, AB

1,961 sq ft
3 bedrooms
2.5 bathrooms

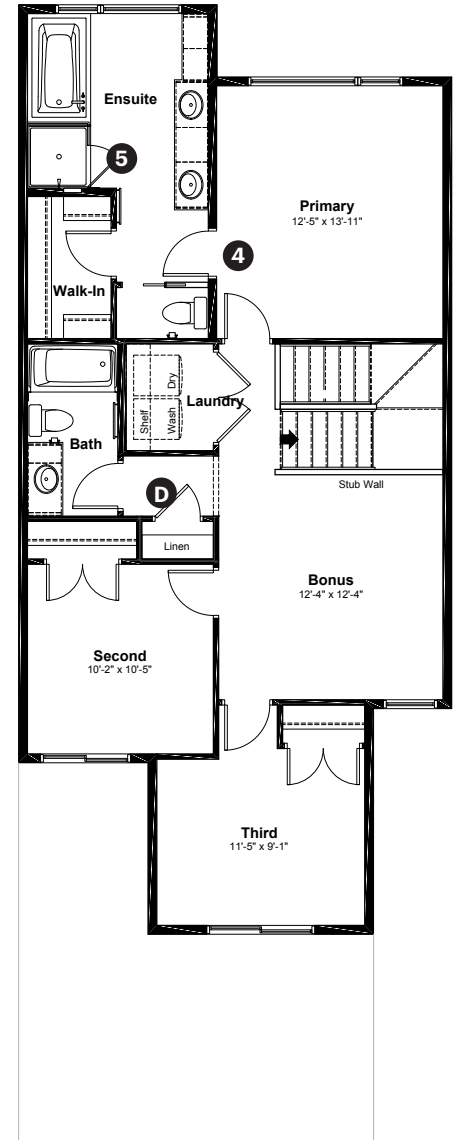
Prairie
Elevation

Anthem

Main Floor: 899 sq ft



Upper Floor: 1,062 sq ft



Quick Possession Home Options

- ① Side entry
- ② Main floor railing
- ③ Level 2 cabinet layout including a built in microwave and chimney hoodfan
- ④ Primary ensuite option 1
- ⑤ Tiled walls with niche in ensuite shower

Quick Possession Home Highlights

- Ⓐ Main floor office with window
- Ⓑ 9' high main floor ceilings
- Ⓒ Oversized main floor closet
- Ⓓ Large upstairs linen closet

Dimensions, sizes, specifications, layouts and materials are approximate only and subject to change without notice. The builder reserves the right to make change and modifications to the information contained herein. E.&O.E.

Front Drive 110

Quick
Possession

McConachie
HEIGHTS

17545 62A Street NW
Edmonton, AB

1,961 sq ft
3 bedrooms
2.5 bathrooms

Prairie
Elevation

Anthem



Features

Anthem Construction Standards

- Low maintenance architectural asphalt shingles
- Anthem maximizes window coverage on every home to provide your home with natural light
- Windows are also triple plane low-E argon filled windows above grade
- Includes an 50 gallon gas water tank and 96% high-efficient gas furnace with dual-stage with variable speeds. It also has an integrated HRV system with dedicated pick up locations in each bathroom with timers for easy use
- Decora type switches throughout the home
- R-50 blown insulation in all attic spaces
- Rough-in waterline to fridge

The Interior

- Ceilings are finished with a splatter texture
- Luxury vinyl plank flooring on main floor
- Luxury vinyl tile flooring in upper bathrooms and laundry
- Carpet on finished stairs and upstairs with an 8lb underlay
- Quartz countertops in kitchen and bathrooms
- Undermount stainless steel kitchen sink
- Undermount bathroom sinks
- Stainless steel appliance package
- Black matte lighting package
- Spindle railing on main floor stairwell

Dimensions, sizes, specifications, layouts and materials are approximate only and subject to change without notice. The builder reserves the right to make change and modifications to the information contained herein. E.&O.E.

Front Drive 110

Anthem Home Palette Selections

Model: Front Drive 110
 Address: 17545 62A Street, Edmonton AB

Cabinets, Flooring and Countertops

Wall Paint

Trim Paint

Carpet

Luxury Vinyl Plank

Luxury Vinyl Tile

Bathroom Wall Tile

Cabinets

Cabinet Hardware

Countertops

Kitchen Backsplash

Plumbing

Kitchen Sink

Pedestal Sink

*faucet shown is not included

Kitchen Faucet

Bathroom Faucet

Bathroom Sink

Tub / Shower Faucet

Finishing

Deadbolt

Interior Door Knob

Bathroom Accessories

Interior Doors



Anthem Home Palette Selections

Model: Front Drive 110
 Address: 17545 62A Street, Edmonton AB

Lighting



Dining Room



Island Pendants



Stairway



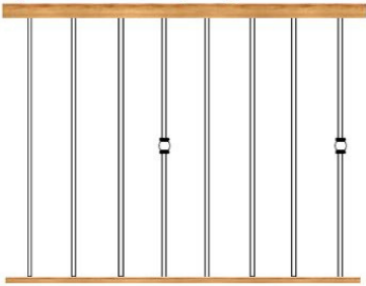
Bathrooms

*Number of lights determined by size of vanity

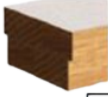


Bedrooms

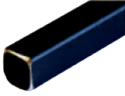
Interior Railing




Spindle Pattern



Handrail



Iron Color



Post

Appliances



Fridge



Chimney Hoodfan



Stove



Built in microwave



Dishwasher

