

Quick Possession



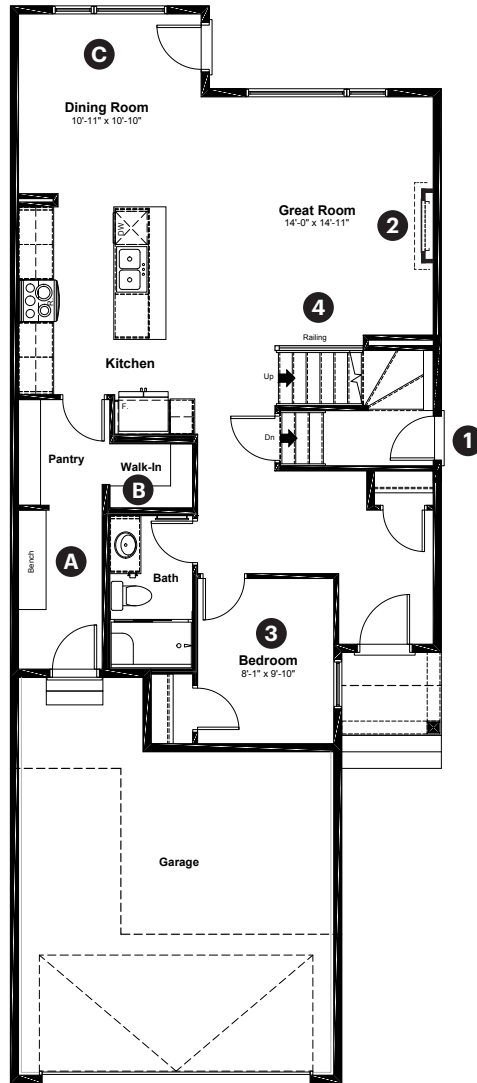
Kinglet
BY BIG LAKE

3966 Wren Loop NW
Edmonton, AB

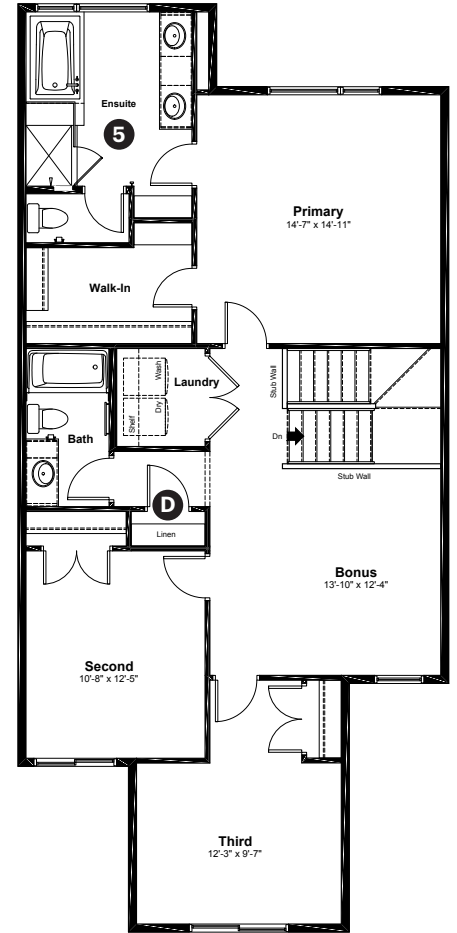
2,257 sq ft
4 bedrooms
2.5 bathrooms

Prairie
Elevation

Main Floor: 1,028 sq ft



Upper Floor: 1,229 sq ft



Quick Possession Home Options

- 1 Side entry
- 2 Electric fireplace
- 3 Main floor bedroom with full bathroom
- 4 Main floor railing
- 5 Fully tiled shower with niche and tiled bench

Quick Possession Home Highlights

- A Built in bench in mudroom
- B Spacious walk in pantry
- C 9' high main floor ceilings
- D Large upstairs linen closet

Dimensions, sizes, specifications, layouts and materials are approximate only and subject to change without notice. The builder reserves the right to make change and modifications to the information contained herein. E.&O.E.

Front Drive 111

Quick
Possession

Anthem 

Kinglet
BY BIG LAKE

**3966 Wren Loop NW
Edmonton, AB**

2,257 sq ft
4 bedrooms
2.5 bathrooms

Prairie
Elevation



Artists interpretation only. May not reflect actual colors.

Prairie

Features

Anthem Construction Standards

- Low maintenance architectural asphalt shingles
- Anthem maximizes window coverage on every home to provide your home with natural light
- Windows are also triple plane low-E argon filled windows above grade
- Includes an 50 gallon gas water tank and 96% high-efficient gas furnace with dual-stage with variable speeds. It also has an integrated HRV system with dedicated pick up locations in each bathroom with timers for easy use
- Decora type switches throughout the home
- R-50 blown insulation in all attic spaces
- Rough-in waterline to fridge

The Interior

- Ceilings are finished with a splatter texture
- Luxury vinyl plank flooring on main floor
- Luxury vinyl tile flooring in upper bathrooms and laundry
- Carpet on finished stairs and upstairs with an 8lb underlay
- Quartz countertops in kitchen and bathrooms
- Upgraded hand shower faucet in main floor shower
- Undermount stainless steel kitchen sink
- Undermount bathroom sinks
- Stainless steel appliance package
- Black matte lighting package
- Spindle railing on main floor stairwell

Dimensions, sizes, specifications, layouts and materials are approximate only and subject to change without notice. The builder reserves the right to make change and modifications to the information contained herein. E.&O.E.

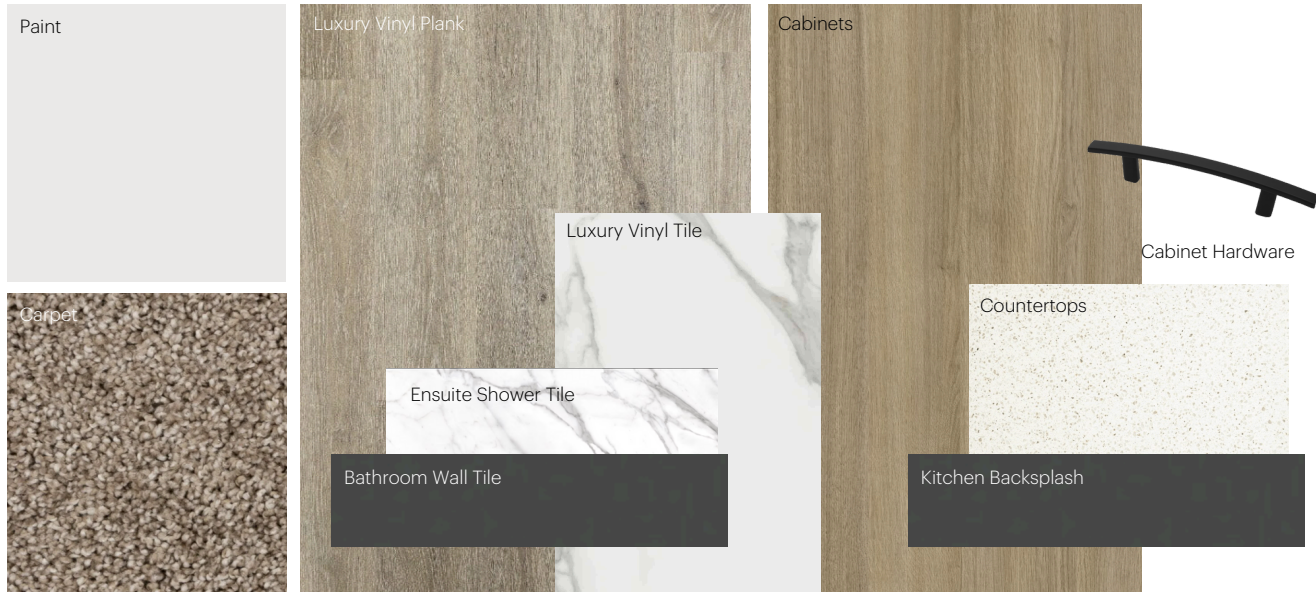
Front Drive 111

Anthem Home Palette Selections

Model: Front Drive 111

Address: 3966 Wren Loop, Edmonton AB

Cabinets, Flooring and Countertops



Plumbing



Finishing



Anthem Home Palette Selections

Model: Front Drive 111

Address: 3966 Wren Loop, Edmonton AB

Lighting



Dining Room



Island Pendants



Stairway



Bathrooms

*Number of lights determined by size of vanity

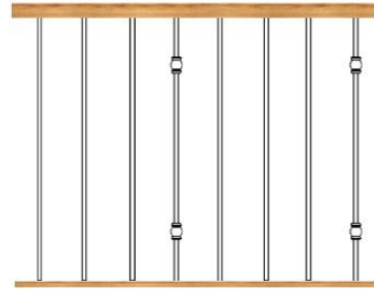


Bedrooms



Halls / Closets

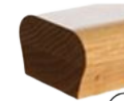
Interior Railing



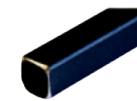
Spindle Pattern



Post Cap



Handrail



Iron Color

Post

Appliances



Fridge



Microwave Hoodfan



Stove



Dishwasher

