

Quick Possession



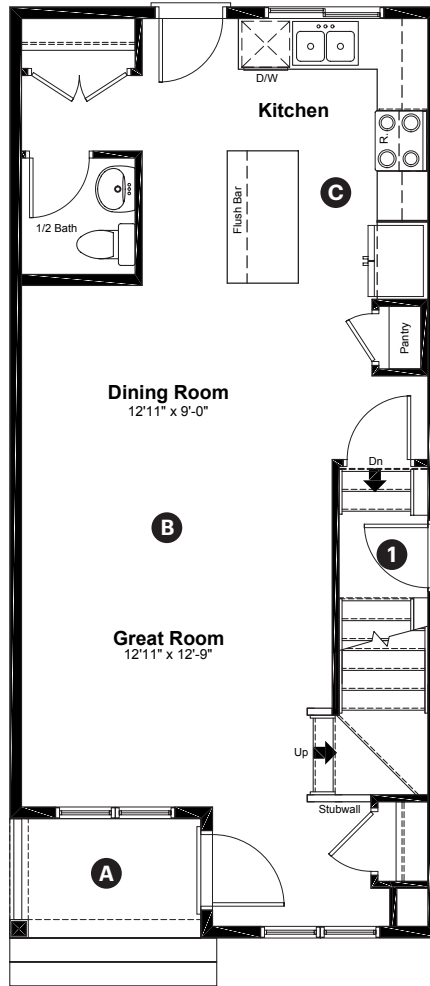
McConachie HEIGHTS

6340 176 Avenue NW
Edmonton, AB

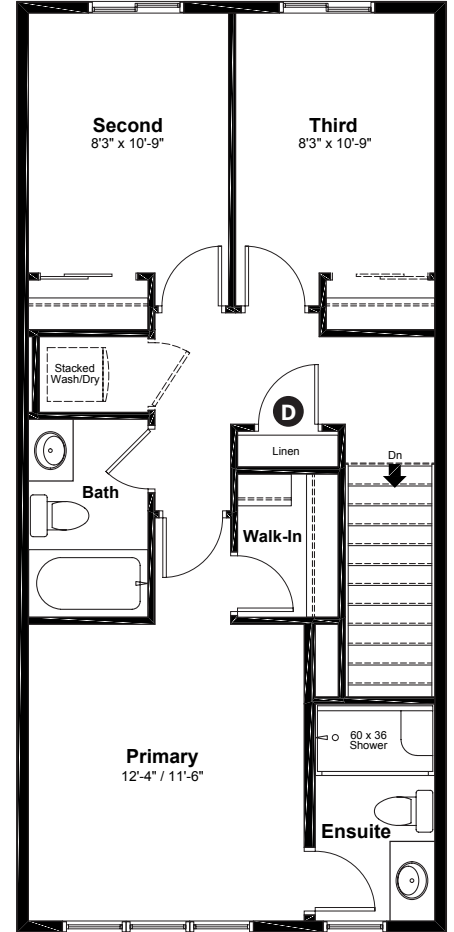
1,364 sq ft
3 bedrooms
2.5 bathrooms

Craftsman
Elevation

Main Floor: 662 sq ft



Upper Floor: 702 sq ft



Quick Possession Home Options

- 1 Side entry

Quick Possession Home Highlights

- A Front porch
- B 9' high main floor ceilings
- C Rear kitchen
- D Spacious laundry room

Laned 150

Dimensions, sizes, specifications, layouts and materials are approximate only and subject to change without notice. The builder reserves the right to make change and modifications to the information contained herein. E.&O.E.

Quick
Possession

McConachie
HEIGHTS

6340 176 Avenue NW
Edmonton, AB

1,364 sq ft
3 bedrooms
2.5 bathrooms

Craftsman
Elevation

Anthem 



Features

Anthem Construction Standards

- Low maintenance, 30-year architectural asphalt shingles
- Anthem maximizes window coverage on every home to provide your home with natural light
- Windows are also triple plane low-E argon filled windows above grade
- Includes an 80 gallon electric water tank and 96% high-efficient gas furnace with dual-stage with variable speeds. It also has an integrated HRV system with dedicated pick up locations in each bathroom with timers for easy use
- Decora type switches throughout the home
- R-50 blown insulation in all attic spaces

The Interior

- Ceilings are finished with a splatter texture
- Luxury vinyl plank flooring on main floor
- Luxury vinyl tile flooring in upper bathrooms and laundry
- Carpet on finished stairs and upstairs with an 8lb underlay
- Two toned kitchen cabinets
- Quartz countertops in kitchen and bathrooms
- Top mount stainless steel kitchen sink
- Stainless steel appliance package and a waterline to the fridge
- Brushed nickel lighting package

Laned 150

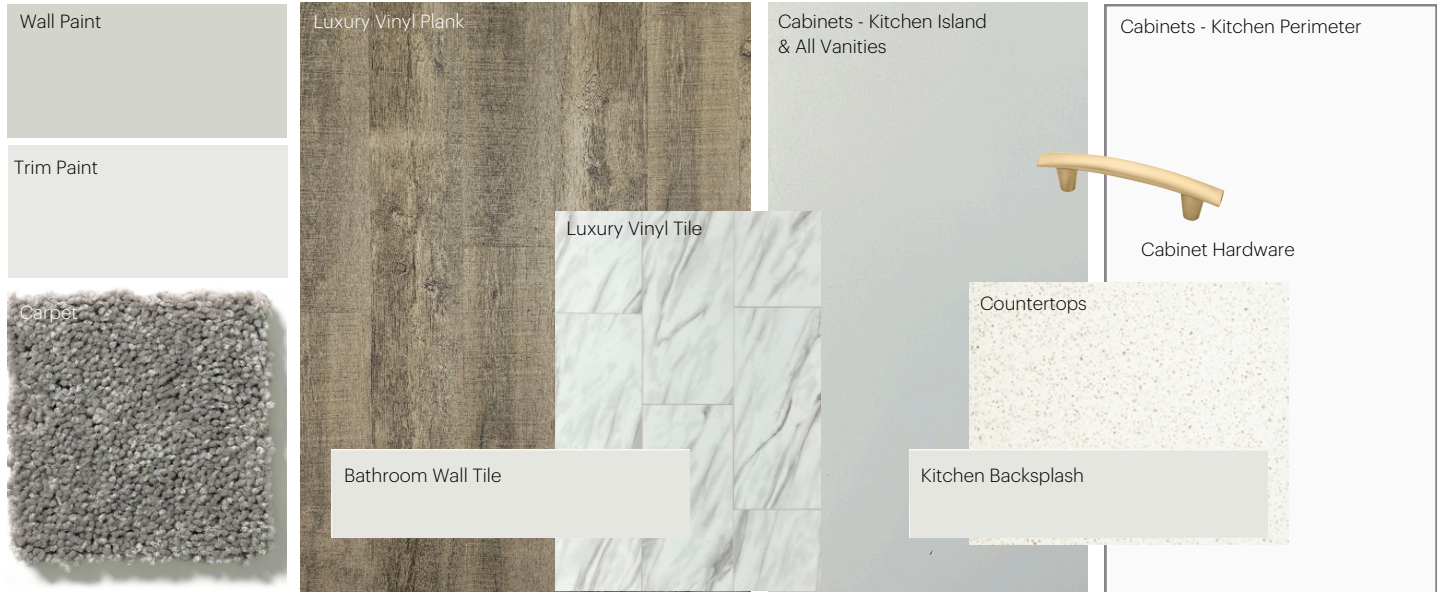
Dimensions, sizes, specifications, layouts and materials are approximate only and subject to change without notice. The builder reserves the right to make change and modifications to the information contained herein. E.&O.E.

Anthem Home Palette Selections

Model: Laned 150

Address: 6340 176 Avenue, Edmonton AB

Cabinets, Flooring and Countertops



Plumbing



Finishing



Anthem Home Palette Selections

Model: Laned 150

Address: 6340 176 Avenue NW, Edmonton

Lighting



Dining Room



Island Pendant



Bedrooms



Halls / Closets



Bathrooms

*Number of lights determined by size of vanity

Appliances



Fridge



Microwave Hoodfan



Stove



Dishwasher

