

Quick Possession



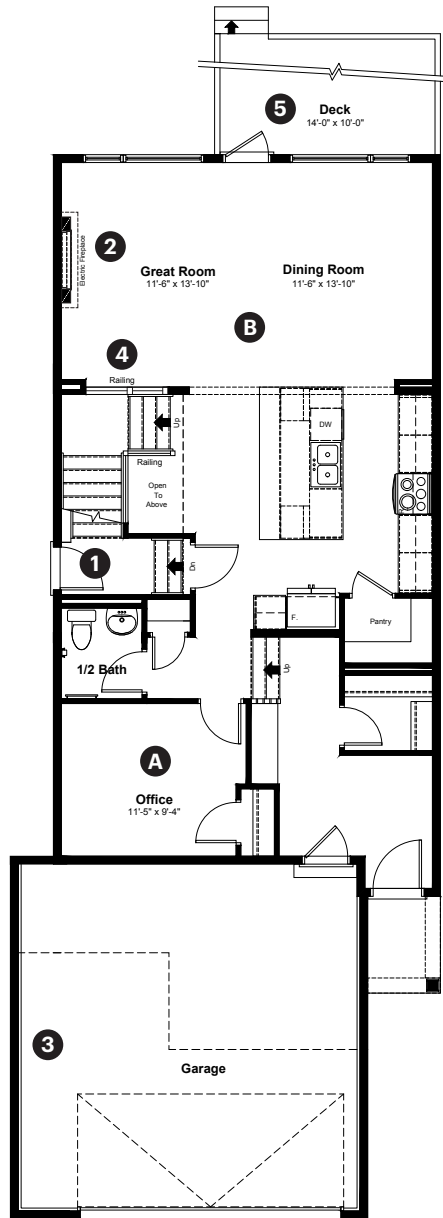
Kinglet
BY BIG LAKE

3947 Wren Loop NW
Edmonton, AB

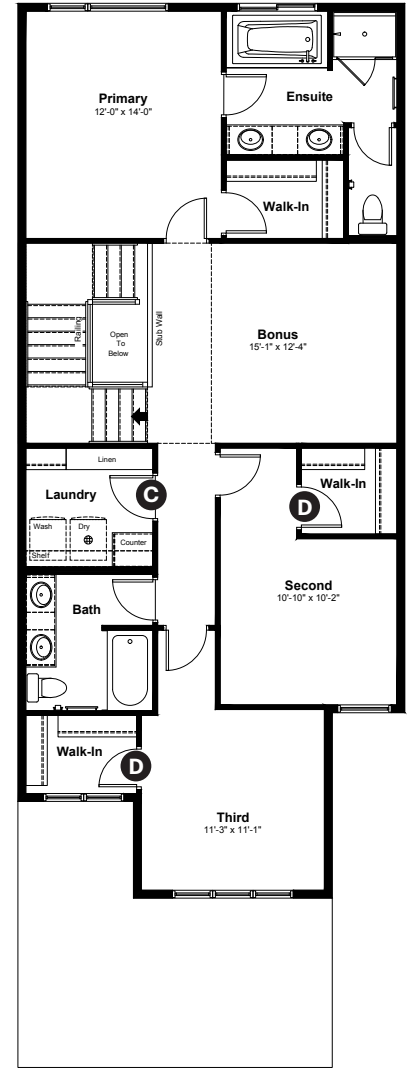
2,284 sq ft
3 bedrooms
2.5 bathrooms

Prairie Elevation

Main Floor: 1,066 sq ft



Upper Floor: 1,218 sq ft



Quick Possession Home Options

- 1 Side entry
- 2 Electric fireplace
- 3 2' garage extension
- 4 Main floor railing
- 5 Rear deck

Quick Possession Home Highlights

- A Main floor office
- B 9' high main floor ceilings
- C Spacious laundry room with counter
- D Walk-in closets in secondary bedrooms

Dimensions, sizes, specifications, layouts and materials are approximate only and subject to change without notice. The builder reserves the right to make change and modifications to the information contained herein. E.&O.E.

Front Drive 120

Quick
Possession

Anthem 

Kinglet
BY BIG LAKE

**3947 Wren Loop NW
Edmonton, AB**

2,284 sq ft
3 bedrooms
2.5 bathrooms

Prairie Elevation



Artists interpretation only. May not reflect actual colors.

Prairie

Features

Anthem Construction Standards

- Low maintenance architectural asphalt shingles
- Anthem maximizes window coverage on every home to provide your home with natural light
- Windows are also triple plane low-E argon filled windows above grade
- Includes an 50 gallon gas water tank and 96% high-efficient gas furnace with dual-stage with variable speeds. It also has an integrated HRV system with dedicated pick up locations in each bathroom with timers for easy use
- Decora type switches throughout the home
- R-50 blown insulation in all attic spaces

The Interior

- Ceilings are finished with a splatter texture
- Luxury vinyl plank flooring on main floor
- Luxury vinyl tile flooring in upper bathrooms and laundry
- Carpet on finished stairs and upstairs with an 8lb underlay
- Quartz countertops in kitchen and bathrooms
- Top mount stainless steel kitchen sink
- Stainless steel appliance package including a chimney hoodfan
- Waterline to the fridge
- Brushed nickel lighting package
- Spindle railing on main floor stairwell

Front Drive 120

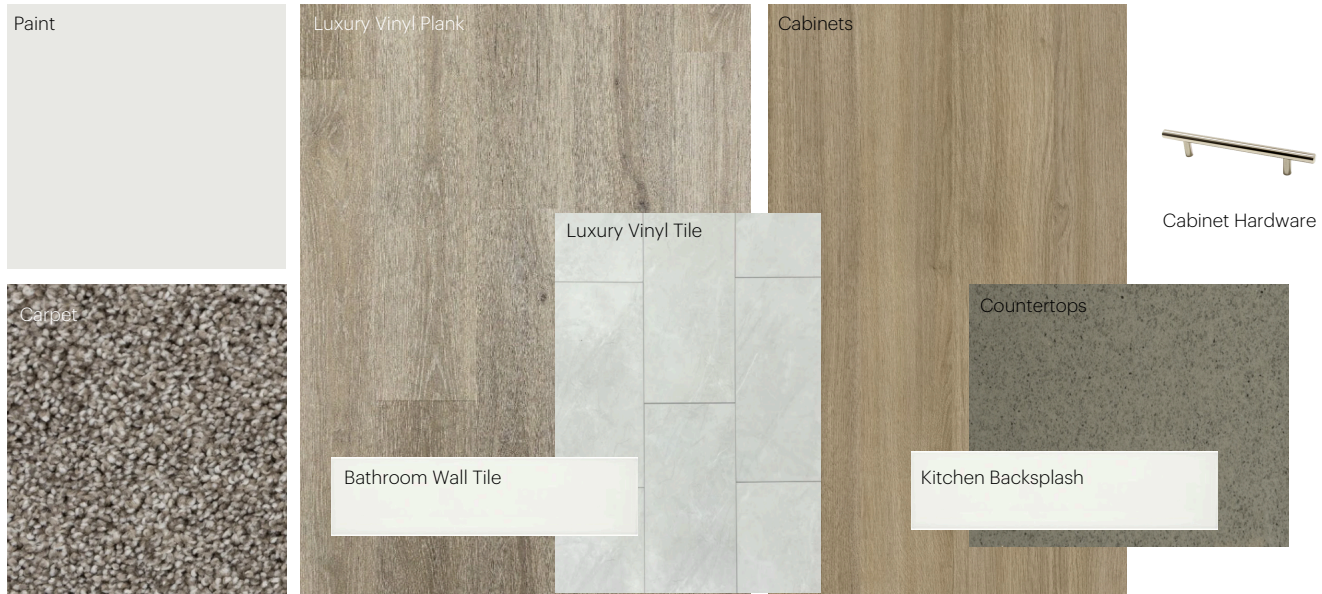
Dimensions, sizes, specifications, layouts and materials are approximate only and subject to change without notice. The builder reserves the right to make change and modifications to the information contained herein. E.&O.E.

Anthem Home Palette Selections

Model: Front Drive 120

Address: 3947 Wren Loop NW, Edmonton Alberta

Cabinets, Flooring and Countertops



Plumbing



Kitchen Sink



Pedestal Sink
*faucet shown is not included



Kitchen Faucet



Roman Tub Filler



Bathroom Faucet



Bathroom Sink



Tub / Shower Faucet

Finishing



Deadbolt



Interior Door Knob



Bathroom Accessories



Interior Doors



Anthem Home Palette Selections

Model: Front Drive 120

Address: 3947 Wren Loop NW, Edmonton Alberta

Lighting



Dining Room



Bathrooms

*Number of lights determined by size of vanity



Island Pendant



Stairwell

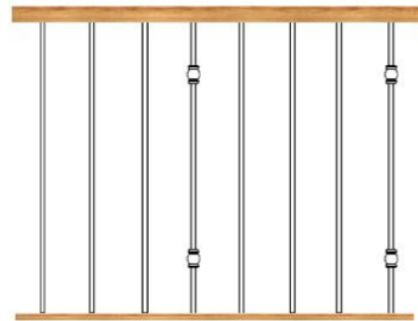


Halls / Closets



Bedrooms

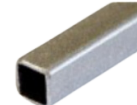
Railing



Spindle Pattern



Handrail



Iron Color



Post Cap

Post

Appliances



Fridge



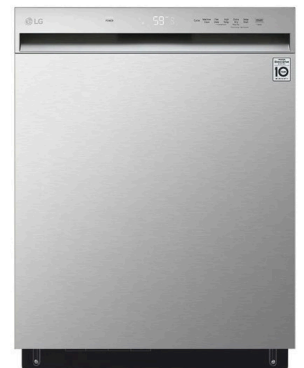
Stove



Chimney Hoodfan



Built-In Microwave



Dishwasher

