

Quick
Possession



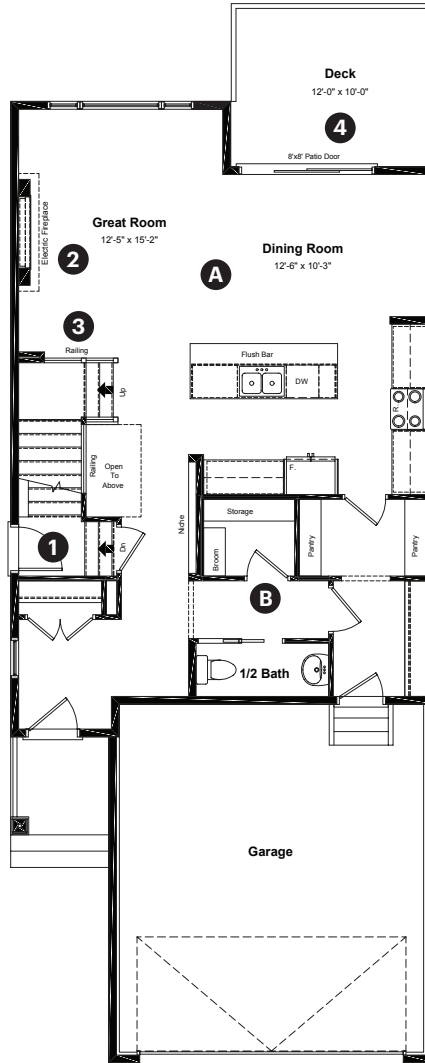
Kinglet
BY BIG LAKE

3945 Wren Loop NW
Edmonton, AB

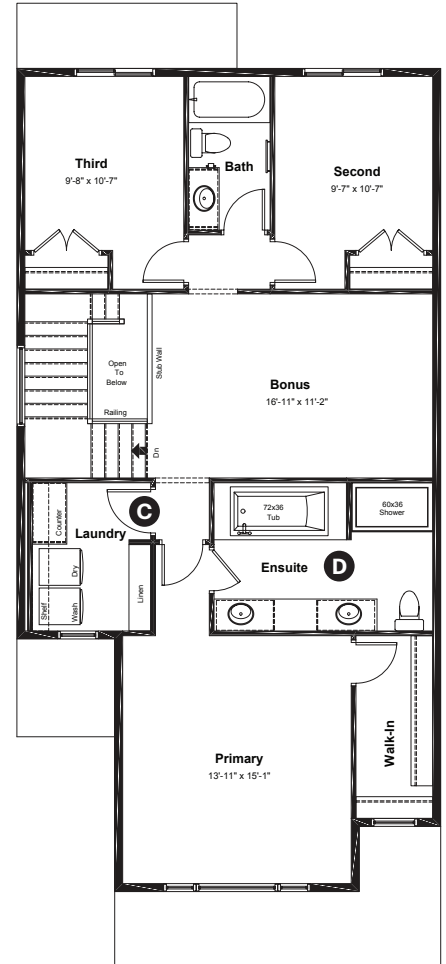
2,102 sq ft
3 bedrooms
2.5 bathrooms

Craftsman Elevation

Main Floor: 925 sq ft



Upper Floor: 1,177 sq ft



Quick Possession Home Options

- 1 Side entry
- 2 Electric fireplace
- 3 Main floor railing
- 4 Rear deck

Quick Possession Home Highlights

- A 9' high main floor ceilings
- B Oversized main floor closet
- C Spacious laundry room
- D Dual sinks in ensuite

Dimensions, sizes, specifications, layouts and materials are approximate only and subject to change without notice. The builder reserves the right to make change and modifications to the information contained herein. E.&O.E.

Front Drive 150

Quick
Possession

Anthem 

Kinglet
BY BIG LAKE

**3945 Wren Loop NW
Edmonton, AB**

2,102 sq ft
3 bedrooms
2.5 bathrooms

Craftsman Elevation



Features

Anthem Construction Standards

- Low maintenance, 30-year architectural asphalt shingles
- Anthem maximizes window coverage on every home to provide your home with natural light
- Windows are also triple plane low-E argon filled windows above grade
- Includes an 50 gallon gas water tank and 96% high-efficient gas furnace with dual-stage with variable speeds. It also has an integrated HRV system with dedicated pick up locations in each bathroom with timers for easy use
- Decora type switches throughout the home
- R-50 blown insulation in all attic spaces

The Interior

- Ceilings are finished with a splatter texture
- Luxury vinyl plank flooring on main floor
- Luxury vinyl tile flooring in upper bathrooms and laundry
- Carpet on finished stairs and upstairs with an 8lb underlay
- Quartz countertops in kitchen and bathrooms
- Undermount stainless steel kitchen sink
- Stainless steel appliance package including a chimney hoodfan
- Waterline to the fridge
- Black matte lighting package
- Spindle railing on main floor stairwell

Front Drive 150

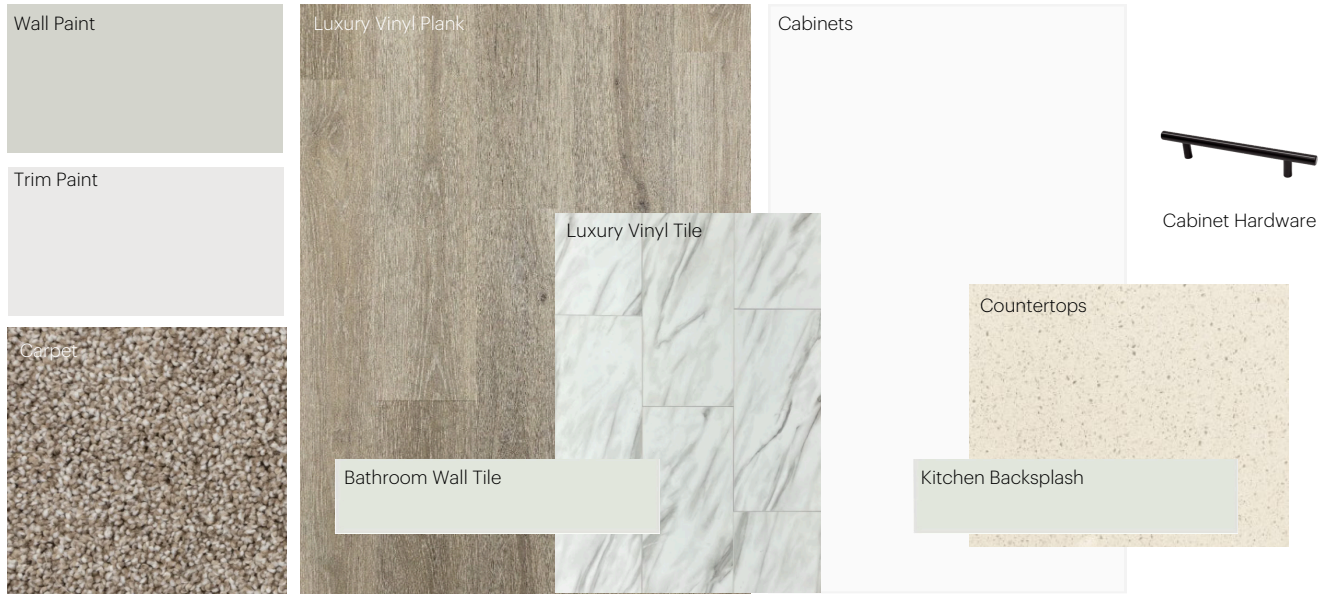
Dimensions, sizes, specifications, layouts and materials are approximate only and subject to change without notice. The builder reserves the right to make change and modifications to the information contained herein. E.&O.E.

Anthem Home Palette Selections

Model: Front Drive 150

Address: 3945 Wren Loop NW, Edmonton Alberta

Cabinets, Flooring and Countertops



Plumbing



Finishing



Anthem Home Palette Selections

Model: Front Drive 150

Address: 3945 Wren Loop NW, Edmonton Alberta

Lighting



Dining Room



Island Pendant



Stairwell



Bathrooms

*Number of lights determined by size of vanity

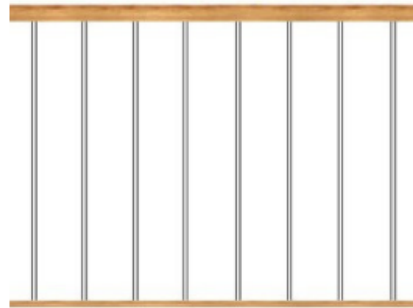


Halls / Closets



Bedrooms

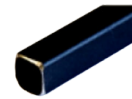
Railing



Spindle Pattern



Handrail



Iron Color



Post Cap

Post

Appliances



Fridge



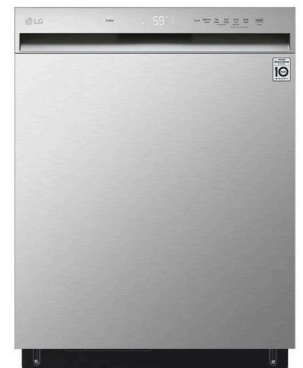
Stove



Chimney Hoodfan



Built-In Microwave



Dishwasher

