

Quick Possession

McConachie HEIGHTS

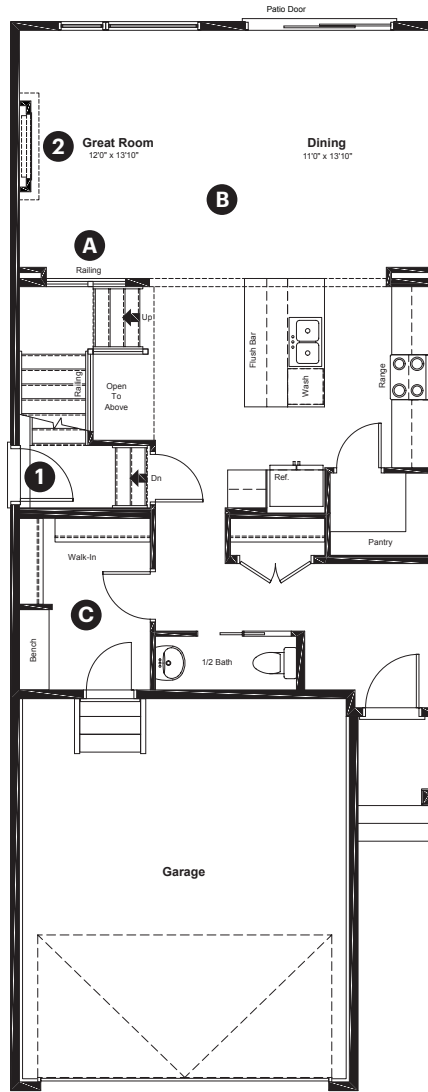
6319 175 Avenue NW
Edmonton, AB

2,062 sq ft
3 bedrooms
2.5 bathrooms

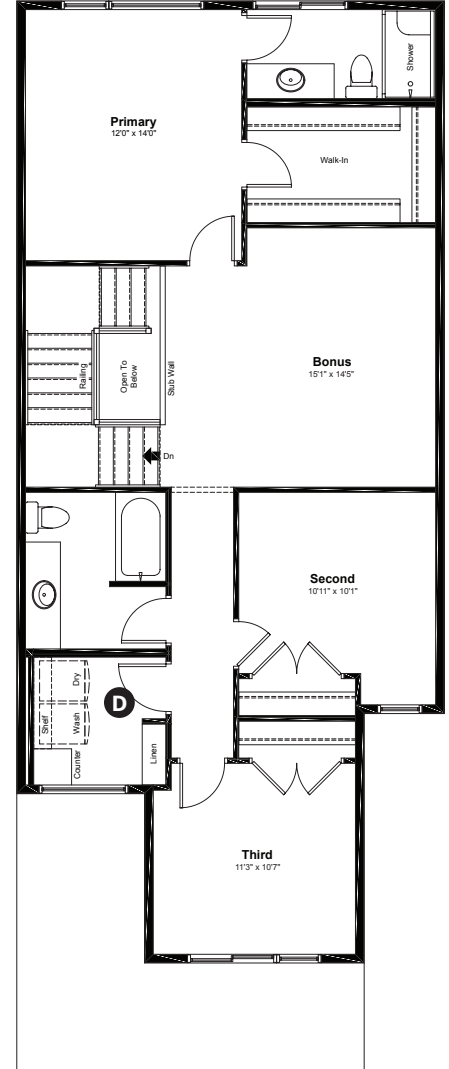
Prairie Elevation

Anthem

Main Floor: 917 sq ft



Upper Floor: 1,145 sq ft



Quick Possession Home Options

- 1 Side entry
- 2 Electric fireplace

Quick Possession Home Highlights

- A Main floor railing
- B 9' high main floor ceilings
- C Spacious mudroom with built-in bench
- D Spacious laundry room

Dimensions, sizes, specifications, layouts and materials are approximate only and subject to change without notice. The builder reserves the right to make change and modifications to the information contained herein. E.&O.E.

Front Drive 140

Quick
Possession

Anthem 

McConachie
HEIGHTS

6319 175 Avenue NW
Edmonton, AB

2,062 sq ft
3 bedrooms
2.5 bathrooms

Prairie Elevation



Features

Anthem Construction Standards

- Low maintenance, 30-year architectural asphalt shingles
- Anthem maximizes window coverage on every home to provide your home with natural light
- Windows are also triple plane low-E argon filled windows above grade
- Includes an 50 gallon gas water tank and 96% high-efficient gas furnace with dual-stage with variable speeds. It also has an integrated HRV system with dedicated pick up locations in each bathroom with timers for easy use
- Decora type switches throughout the home
- R-50 blown insulation in all attic spaces

The Interior

- Ceilings are finished with a splatter texture
- Luxury vinyl plank flooring on main floor
- Luxury vinyl tile flooring in upper bathrooms and laundry
- Carpet on finished stairs and upstairs with an 8lb underlay
- Quartz countertops in kitchen and bathrooms
- Top mount stainless steel kitchen sink
- Stainless steel appliance package and a waterline to the fridge
- Brushed nickel lighting package
- Spindle railing on main floor stairwell

Dimensions, sizes, specifications, layouts and materials are approximate only and subject to change without notice. The builder reserves the right to make change and modifications to the information contained herein. E.&O.E.

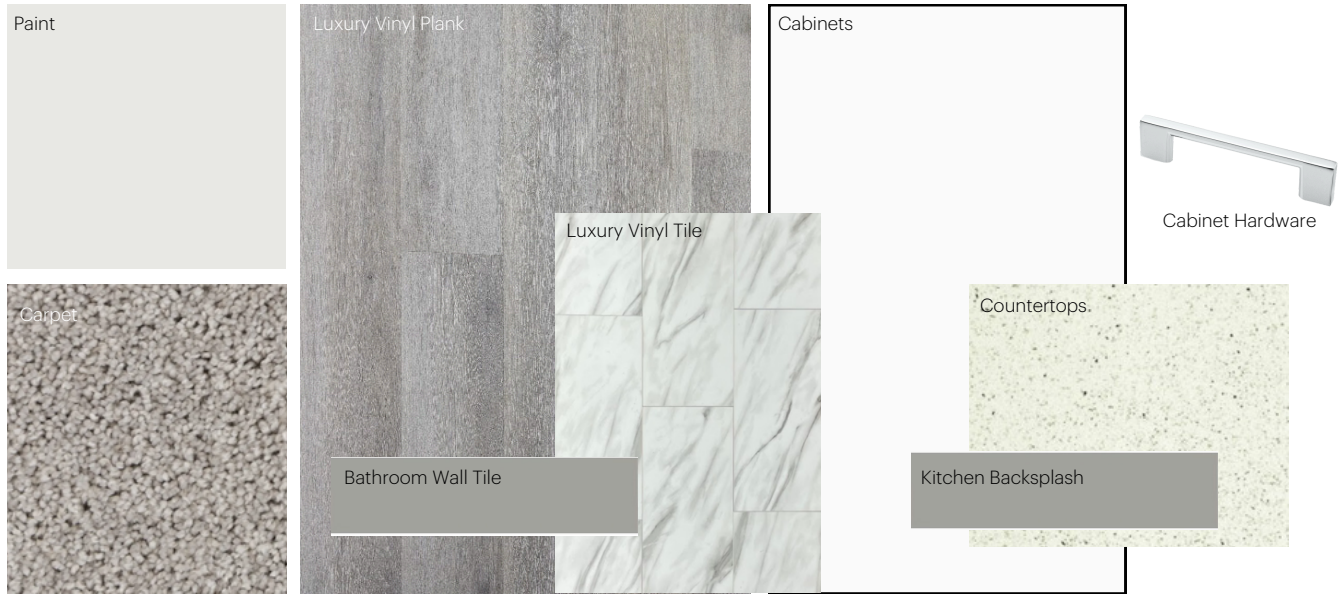
Front Drive 140

Anthem Home Palette Selections

Model: Front Drive 140

Address: 6319 175 Avenue, Edmonton AB

Cabinets, Flooring and Countertops



Plumbing



Finishing



Anthem Home Palette Selections

Model: Front Drive 140

Address: 6319 175 Avenue NW, Edmonton

Lighting



Dining Room



Island Pendant



Stairwell



Bathrooms

*Number of lights determined by size of vanity

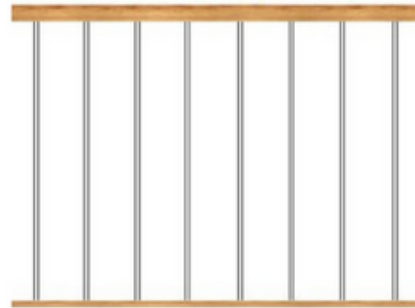


Halls / Closets



Bedrooms

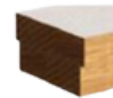
Railing



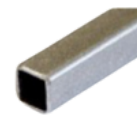
Spindle Pattern



Post Cap



Handrail



Iron Color

Post

Appliances



Fridge



Microwave Hoodfan



Stove



Dishwasher

