

Quick  
Possession



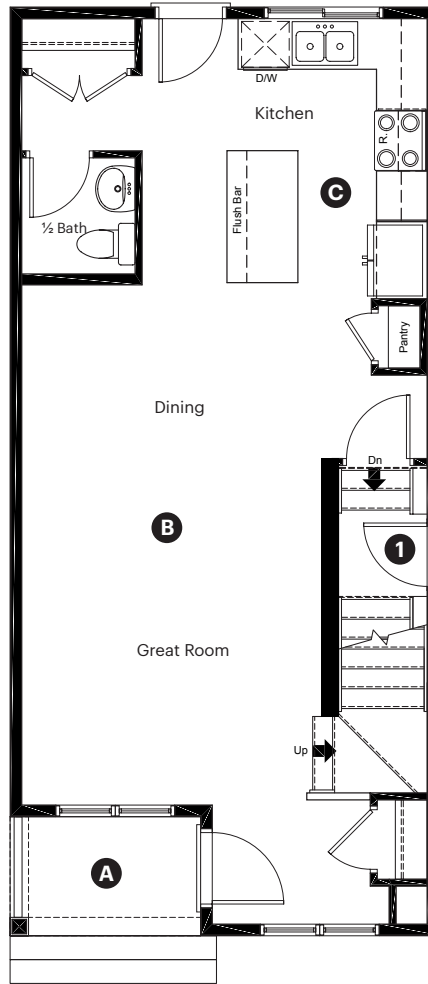
McConachie  
HEIGHTS

6332 176 Avenue  
Edmonton, AB

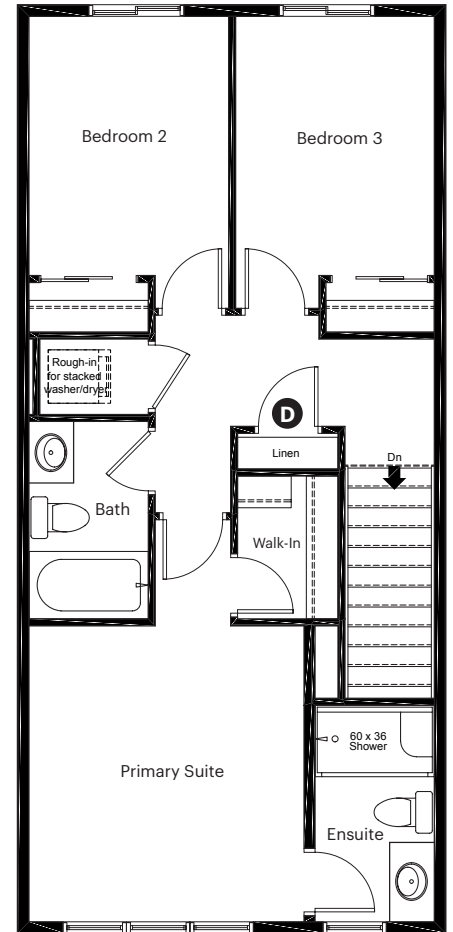
1,364 sq ft  
3 bedrooms  
2.5 bathrooms

Prairie Elevation

Main Floor: 662 sq ft



Upper Floor: 702 sq ft



### Quick Possession Home Options

- 1 Side entry

### Quick Possession Home Highlights

- A Front porch
- B 9' high main floor ceilings
- C Rear kitchen
- D Upstairs linen closet

Dimensions, sizes, specifications, layouts and materials are approximate only and subject to change without notice. The builder reserves the right to make change and modifications to the information contained herein. E.&O.E.

Laned 150

Quick  
Possession

Anthem 

McConachie  
HEIGHTS

6332 176 Avenue  
Edmonton, AB

1,364 sq ft  
3 bedrooms  
2.5 bathrooms

Prairie Elevation



## Features

### Anthem Construction Standards

- Low maintenance, 30-year architectural asphalt shingles
- Anthem maximizes window coverage on every home to provide your home with natural light
- Windows are also triple plane low-E argon filled windows above grade
- Includes an 80 gallon electric water tank and 96% high-efficient gas furnace with dual-stage with variable speeds. It also has an integrated HRV system with dedicated pick up locations in each bathroom with timers for easy use
- Decora type switches throughout the home
- R-50 blown insulation in all attic spaces

### The Interior

- Ceilings are finished with a splatter texture
- Luxury vinyl plank flooring on main floor
- Luxury vinyl tile flooring in upper bathrooms and laundry
- Carpet on finished stairs and upstairs with an 8lb underlay
- Quartz countertops in kitchen and bathrooms
- Top mount stainless steel kitchen sink
- Stainless steel appliance package and a waterline to the fridge
- Brushed nickel lighting package

Laned 150

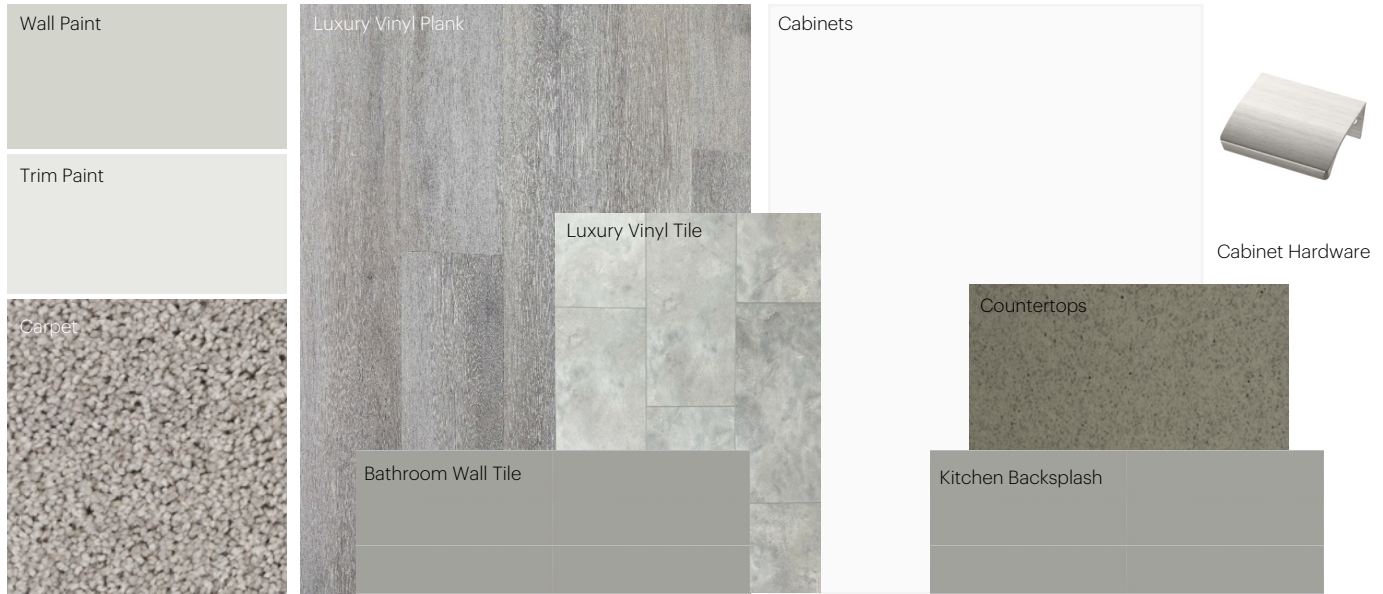
Dimensions, sizes, specifications, layouts and materials are approximate only and subject to change without notice. The builder reserves the right to make change and modifications to the information contained herein. E.&O.E.

# Anthem Home Palette Selections

**Model:** Laned 150

**Address:** 6332 176 Avenue, Edmonton

## Cabinets, Flooring and Countertops



## Plumbing



Pedestal Sink  
\*faucet shown is not included

## Finishing



# Anthem Home Palette Selections

**Model:** Laned 150

**Address:** 6332 176 Avenue, Edmonton

---

## Lighting



Dining Room



Island Pendant



Halls / Closets



Bedrooms



Bathrooms

\*Number of lights determined by size of vanity

## Appliances



Fridge



Microwave Hoodfan



Stove



Dishwasher

