

Quick Possession



McConachie HEIGHTS

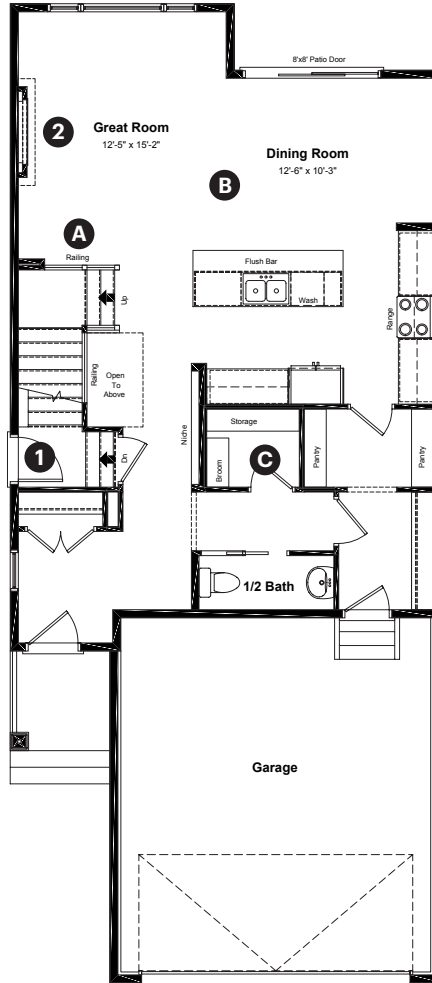
6347 175 Avenue NW
Edmonton, AB

2,102 sq ft
3 bedrooms
2.5 bathrooms

Craftsman
Elevation

Front Drive 150

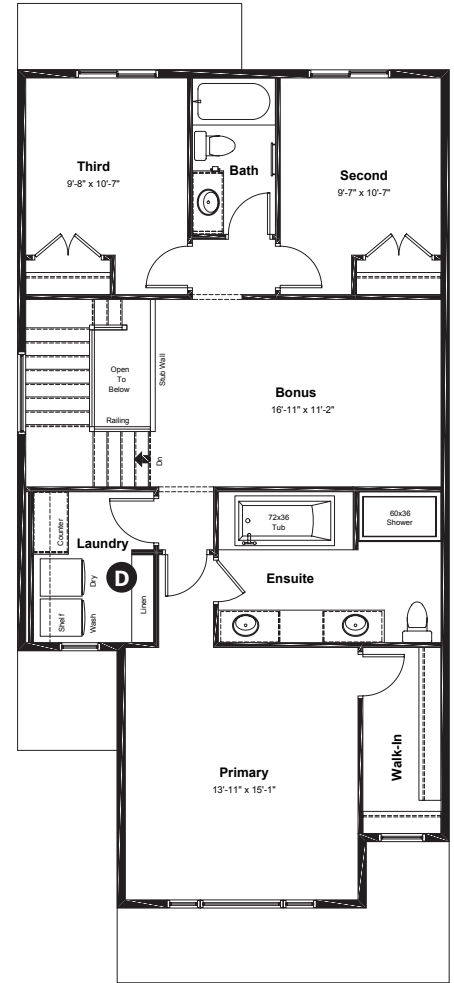
Main Floor: 925 sq ft



Quick Possession Home Options

- 1 Side entry
- 2 Electric fireplace

Upper Floor: 1,177 sq ft



Quick Possession Home Highlights

- A Main floor railing
- B 9' high main floor ceilings
- C Oversized main floor closet
- D Spacious laundry room

Dimensions, sizes, specifications, layouts and materials are approximate only and subject to change without notice. The builder reserves the right to make change and modifications to the information contained herein. E.&O.E.

Quick
Possession

Anthem 

McConachie
HEIGHTS

6347 175 Avenue NW
Edmonton, AB

2,102 sq ft
3 bedrooms
2.5 bathrooms

Craftsman
Elevation



Features

Anthem Construction Standards

- Low maintenance, 30-year architectural asphalt shingles
- Anthem maximizes window coverage on every home to provide your home with natural light
- Windows are also triple plane low-E argon filled windows above grade
- Includes an 50 gallon gas water tank and 96% high-efficient gas furnace with dual-stage with variable speeds. It also has an integrated HRV system with dedicated pick up locations in each bathroom with timers for easy use
- Decora type switches throughout the home
- R-50 blown insulation in all attic spaces

The Interior

- Ceilings are finished with a splatter texture
- Luxury vinyl plank flooring on main floor
- Luxury vinyl tile flooring in upper bathrooms and laundry
- Carpet on finished stairs and upstairs with an 8lb underlay
- Quartz countertops in kitchen and bathrooms
- Top mount stainless steel kitchen sink
- Stainless steel appliance package and a waterline to the fridge
- Brushed nickle lighting package
- Spindle railing on main floor stairwell

Dimensions, sizes, specifications, layouts and materials are approximate only and subject to change without notice. The builder reserves the right to make change and modifications to the information contained herein. E.&O.E.

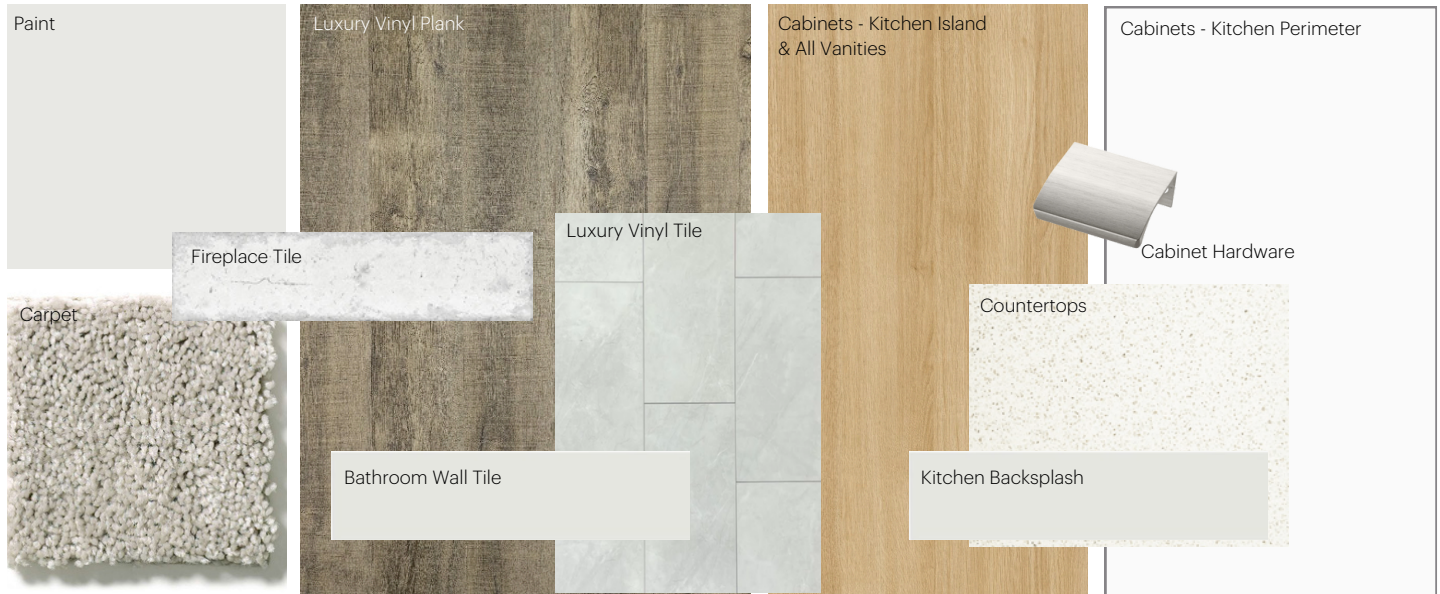
Front Drive 150

Anthem Home Palette Selections

Model: Front Drive 150

Address: 6347 175 Avenue, Edmonton AB

Cabinets, Flooring and Countertops



Plumbing



Kitchen Sink



Pedestal Sink
*faucet shown is not included



Kitchen Faucet



Bathroom Faucet



Bathroom Sink



Roman Tub Filler



Tub / Shower Faucet

Finishing



Deadbolt



Interior Door Knob



Bathroom Accessories



Interior Doors



Anthem Home Palette Selections

Model: Front Drive 150

Address: 6347 175 Avenue NW, Edmonton

Lighting



Dining Room



Island Pendant



Stairwell



Bathrooms

*Number of lights determined by size of vanity

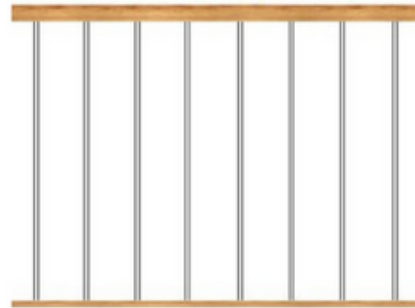


Halls / Closets



Bedrooms

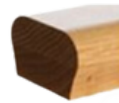
Railing



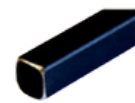
Spindle Pattern



Post Cap



Handrail



Iron Color

Post

Appliances



Fridge



Microwave Hoodfan



Stove



Dishwasher

