

Quick  
Possession

McConachie  
HEIGHTS

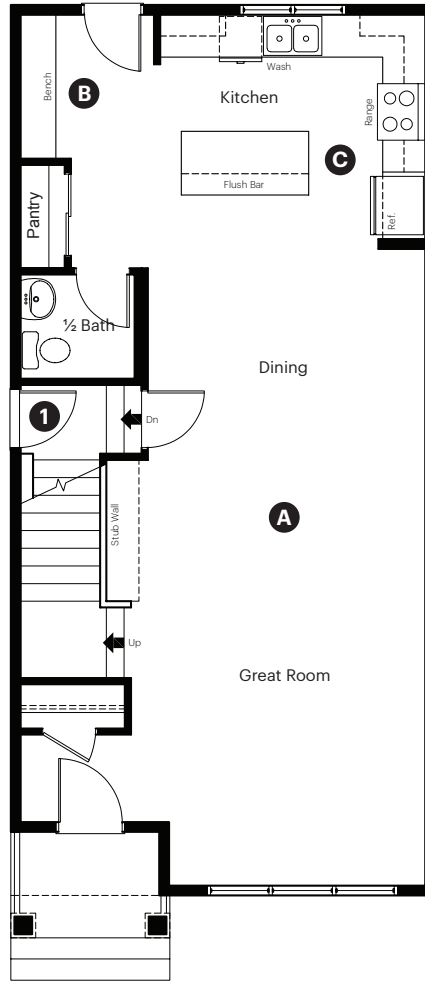
6244 175 Avenue  
Edmonton, AB

1,647 sq ft  
3 bedrooms  
2.5 bathrooms

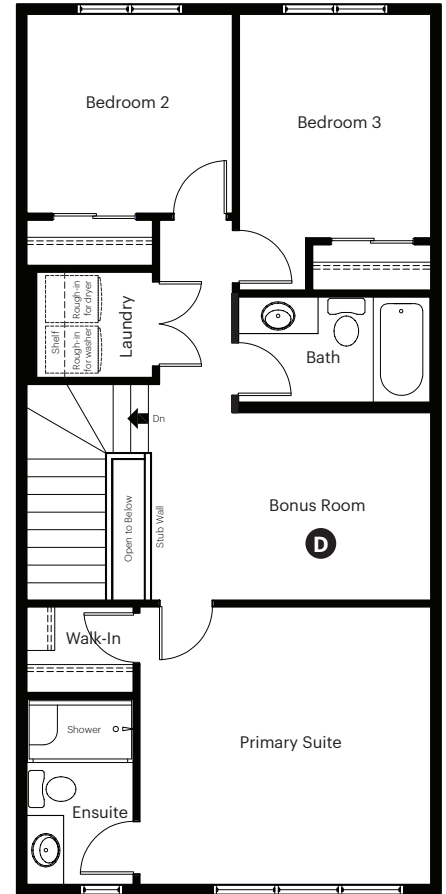
Prairie Elevation

Anthem

Main Floor: 817 sq ft



Upper Floor: 830 sq ft



### Quick Possession Home Options

- 1 Side entry

### Quick Possession Home Highlights

- A 9' high main floor ceilings
- B Built-in bench in mudroom
- C Rear kitchen
- D Central bonus room

Dimensions, sizes, specifications, layouts and materials are approximate only and subject to change without notice. The builder reserves the right to make change and modifications to the information contained herein. E.&O.E.

Laned 110

Quick  
Possession

Anthem 

*McConachie*  
HEIGHTS

6244 175 Avenue  
Edmonton, AB

1,647 sq ft  
3 bedrooms  
2.5 bathrooms

Prairie Elevation



## Features

### Anthem Construction Standards

- Low maintenance, 30-year architectural asphalt shingles
- Anthem maximizes window coverage on every home to provide your home with natural light
- Windows are also triple plane low-E argon filled windows above grade
- Includes an 80 gallon electric water tank and 96% high-efficient gas furnace with dual-stage with variable speeds. It also has an integrated HRV system with dedicated pick up locations in each bathroom with timers for easy use
- Decora type switches throughout the home
- R-50 blown insulation in all attic spaces

### The Interior

- Ceilings are finished with a splatter texture
- Luxury vinyl plank flooring on main floor
- Luxury vinyl tile flooring in upper bathrooms and laundry
- Carpet on finished stairs and upstairs with an 8lb underlay
- Quartz countertops in kitchen and bathrooms
- Top mount stainless steel kitchen sink
- Stainless steel appliance package and a waterline to the fridge
- Black matte lighting package

Laned 110

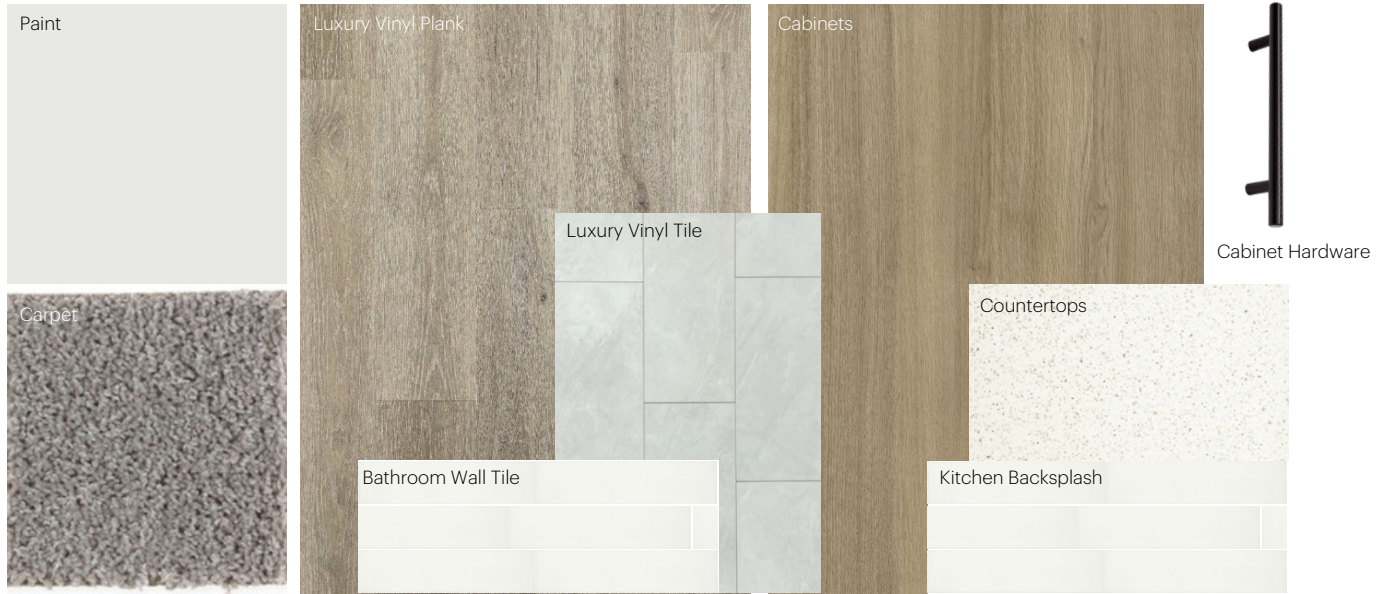
Dimensions, sizes, specifications, layouts and materials are approximate only and subject to change without notice. The builder reserves the right to make change and modifications to the information contained herein. E.&O.E.

# Anthem Home Palette Selections

**Model:** Laned 110

**Address:** 6244 175 Avenue, Edmonton AB

## Cabinets, Flooring and Countertops



## Plumbing



## Finishing



# Anthem Home Palette Selections

**Model:** Laned 110

**Address:** 6244 175 Avenue NW, Edmonton

---

## Lighting



Dining Room



Island Pendant



Halls / Closets



Bedrooms



Bathrooms

\*Number of lights determined by size of vanity

## Appliances



Fridge



Microwave Hoodfan



Stove



Dishwasher

