

Quick
Possession

McConachie
HEIGHTS

17510 63A Street NW
Edmonton, AB

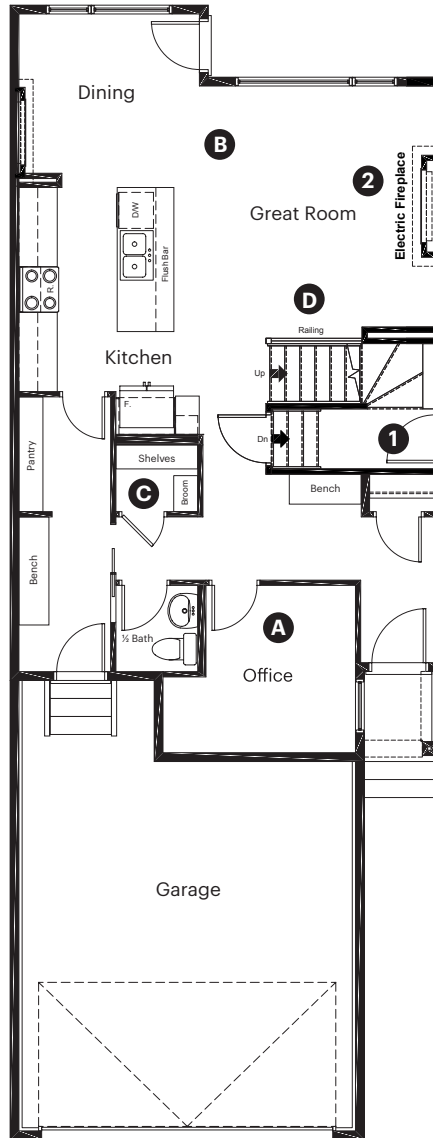
1,961 sq ft
3 bedrooms
2.5 bathrooms

Craftsman
Elevation

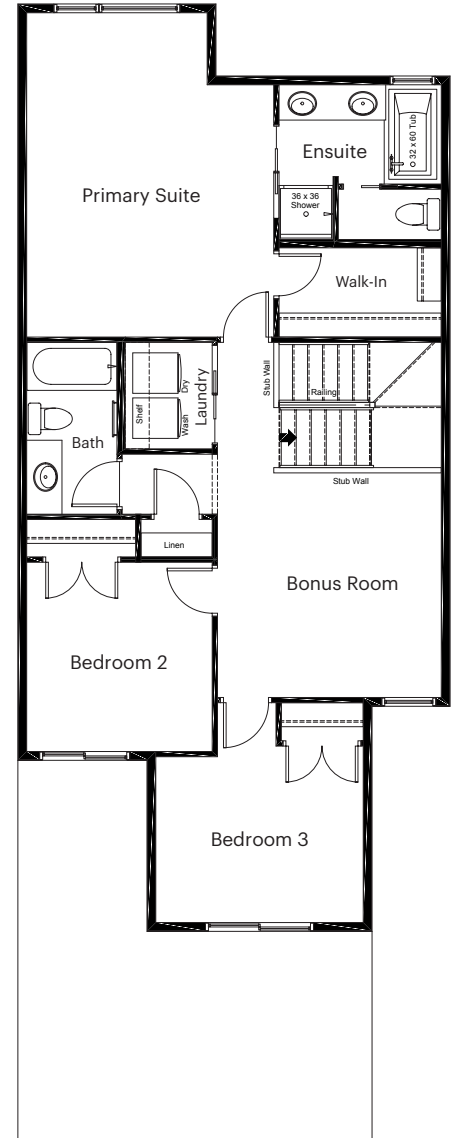
Anthem

Front Drive 110

Main Floor: 899 sq ft



Upper Floor: 1,062 sq ft



Quick Possession Home Options

- 1 Side entry
- 2 Electric fireplace

Quick Possession Home Highlights

- A Main floor office
- B 9' high main floor ceilings
- C Oversized main floor closet
- D Main floor railing

Quick
Possession

Anthem 

McConachie
HEIGHTS

17510 63A Street NW
Edmonton, AB

1,961 sq ft
3 bedrooms
2.5 bathrooms

Craftsman
Elevation



Features

Anthem Construction Standards

- Low maintenance, 30-year architectural asphalt shingles
- Anthem maximizes window coverage on every home to provide your home with natural light
- Windows are also triple plane low-E argon filled windows above grade
- Includes an 50 gallon gas water tank and 96% high-efficient gas furnace with dual-stage with variable speeds. It also has an integrated HRV system with dedicated pick up locations in each bathroom with timers for easy use
- Decora type switches throughout the home
- R-50 blown insulation in all attic spaces

The Interior

- Ceilings are finished with a splatter texture
- Luxury vinyl plank flooring on main floor
- Luxury vinyl tile flooring in upper bathrooms and laundry
- Carpet on finished stairs and upstairs with an 8lb underlay
- Quartz countertops in kitchen and bathrooms
- Top mount stainless steel kitchen sink
- Stainless steel appliance package and a waterline to the fridge
- Black matte lighting package
- Spindle railing on main floor stairwell



Scan to view more information
and interior photos for this home

Dimensions, sizes, specifications, layouts and materials are approximate only and subject to change without notice. The builder reserves the right to make change and modifications to the information contained herein. E.&O.E.

Front Drive 110